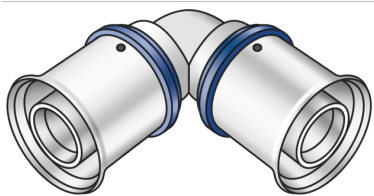


KELOX

KMU420 KELOX-ULTRAX Winkel 90° 75

71103JJ0

aplikační oblasti



certifikace



specifikace

informace o výrobku

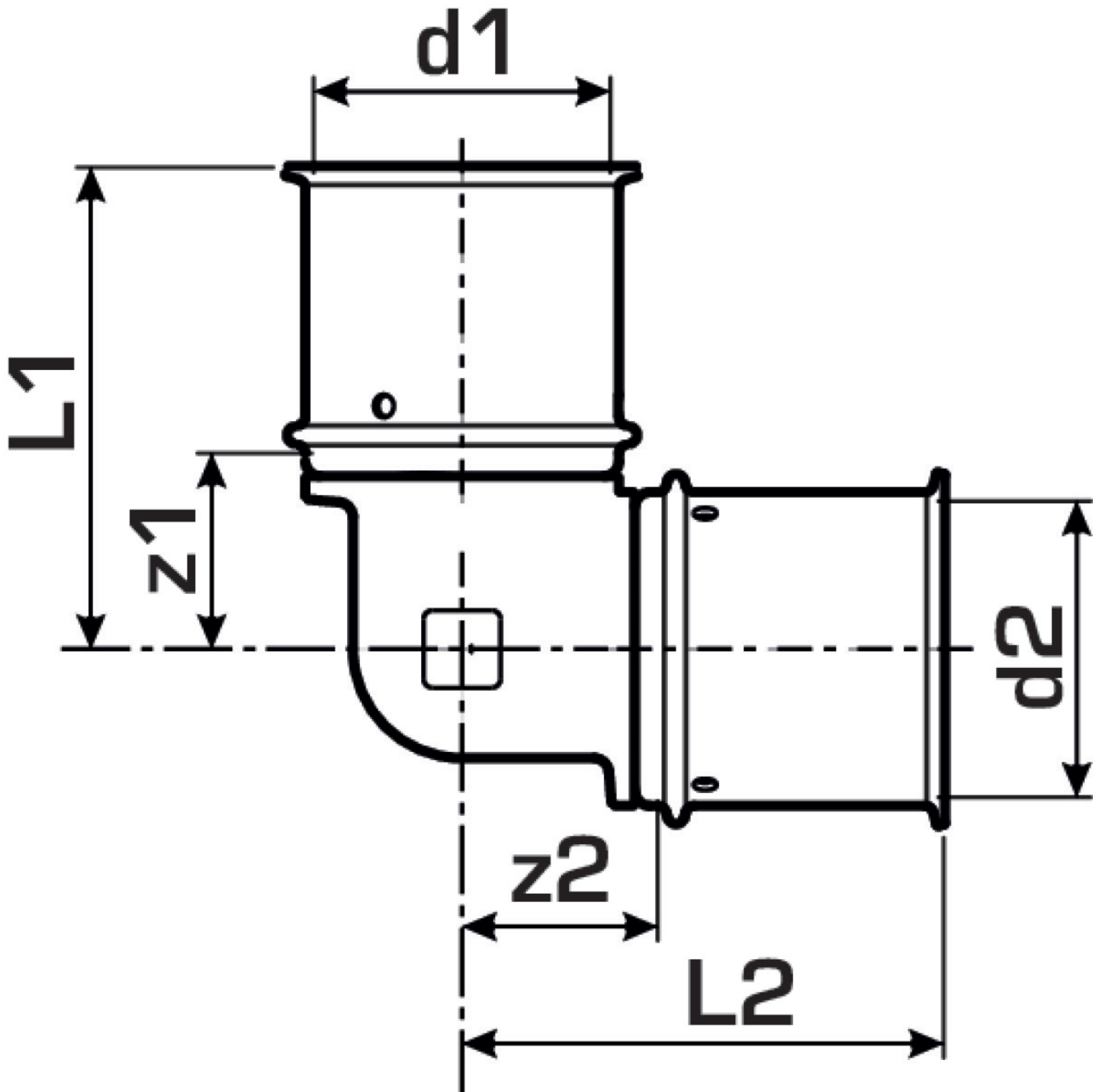
| | |
|---------------|------------|
| port 1 | Pressmuffe |
| port 2 | Pressmuffe |
| execution | 1-teilig |
| design | Winkel |
| angle | 90 ° |
| press contour | U |

technické charakteristiky

| | |
|------------------------------------|--------|
| maximum working pressure at 20 ° C | 10 bar |
|------------------------------------|--------|

produktové informace

| | |
|---------------------|------------------------------|
| VPE1 | 1 SA1 |
| VPE2 | 2 KT1 |
| weight | 1,61 KGM |
| text | KELOX-ULTRAX Winkel 90° |
| INTRNR | 74122000 |
| main material group | KELOX |
| material group | KELOX-ULTRAX Kovové tvarovky |
| code | KMU420 |



| Art. No | label | d1 mm | d2 mm | L1 mm | L2 mm | z1 mm | z2 mm |
|----------|-------|-------|-------|-------|-------|-------|-------|
| 71103JJ0 | 75 | 75 | 75 | 117 | 117 | 53 | 53 |