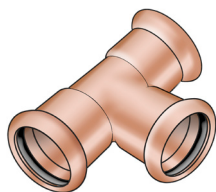




COF440 Kupfer Press-T-Stück



Symbolgrafik

Produktbeschreibung:

Press-T-Stück egal oder reduziert aus Kupfer, inkl. EPDM-Dichtelemente, „unverpresst undicht“
Presskontur: M

Produkteigenschaften:

ÖVGW	W 1.741	Material	Kupfer
Anschluss 1	Pressmuffe	Anschluss 2	Pressmuffe
Anschluss 3	Pressmuffe	Press-Kontur	M
Dichtung	EPDM		

Erweiterte Produkteigenschaften:

Art.-Nr.	Bezeichnung	Gewicht	VPE1	VPE2	Mengeneinheit
52630BBB	15/15/15	0,07 KGM	10	100	STK
52630BCB	15/18/15	0,077 KGM	10	100	STK
52630BDB	15/22/15	0,085 KGM	10	50	STK
52630CBB	18/15/15	0,073 KGM	10	50	STK
52630CBC	18/15/18	0,086 KGM	10	50	STK
52630CCB	18/18/15	0,086 KGM	10	50	STK
52630CCC	18/18/18	0,093 KGM	10	50	STK
52630DBB	22/15/15	0,123 KGM	10	50	STK
52630DBD	22/15/22	0,12 KGM	10	50	STK
52630DCC	22/18/18	0,125 KGM	10	50	STK
52630DCD	22/18/22	0,123 KGM	10	50	STK
52630DDB	22/22/15	0,132 KGM	5	50	STK
52630DDC	22/22/18	0,128 KGM	10	50	STK
52630DDD	22/22/22	0,127 KGM	10	50	STK
52630DED	22/28/22	0,31 KGM	5	35	STK
52630EBE	28/15/28	0,168 KGM	5	25	STK
52630ECE	28/18/28	0,17 KGM	5	25	STK





COF440 Kupfer Press-T-Stück

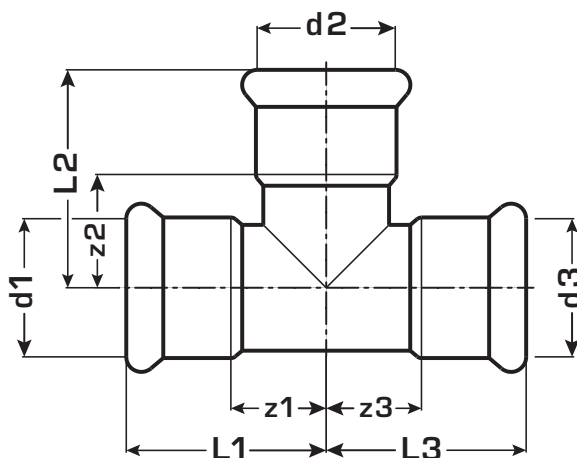
Erweiterte Produkteigenschaften:

Art.-Nr.	Bezeichnung	Gewicht	VPE1	VPE2	Mengeneinheit
52630EDD	28/22/22	0,122 KGM	5	25	STK
52630EDE	28/22/28	0,175 KGM	5	25	STK
52630EED	28/28/22	0,172 KGM	5	25	STK
52630EEE	28/28/28	0,175 KGM	5	25	STK
52630FBF	35/15/35	0,16 KGM	5	30	STK
52630FDF	35/22/35	0,244 KGM	5	15	STK
52630FEE	35/28/28	0,23 KGM	5	15	STK
52630FEF	35/28/35	0,244 KGM	5	20	STK
52630FFF	35/35/35	0,255 KGM	5	15	STK
52630GBG	42/15/42	0,232 KGM	1	10	STK
52630GDG	42/22/42	0,327 KGM	1	15	STK
52630GEG	42/28/42	0,343 KGM	1	5	STK
52630GFF	42/35/35	0,24 KGM	5	10	STK
52630GFG	42/35/42	0,361 KGM	1	8	STK
52630GGG	42/42/42	0,374 KGM	1	10	STK
52630HDH	54/22/54	0,473 KGM	1	8	STK
52630HEH	54/28/54	0,5 KGM	1	5	STK
52630HFH	54/35/54	0,518 KGM	1	5	STK
52630HGG	54/42/42	0,741 KGM	1	8	STK
52630HGH	54/42/54	0,552 KGM	1	5	STK
52630HHH	54/54/54	0,571 KGM	1	4	STK
52630IFI	67/35/67	1,3 KGM	1	4	STK
52630IGI	67/42/67	1,35 KGM	1	4	STK
52630IHI	67/54/67	1,4 KGM	1	4	STK
52630III	67/67/67	1,506 KGM	1	2	STK
52630JDJ	76/22/76	1,48 KGM	1		STK
52630JEJ	76/28/76	1,52 KGM	1		STK
52630JFJ	76/35/76	1,58 KGM	1		STK
52630JGJ	76/42/76	1,661 KGM	1		STK
52630JHJ	76/54/76	1,698 KGM	1		STK
52630JJJ	76/76/76	2,086 KGM	1		STK
52630KHK	89/54/89	2,244 KGM	1		STK
52630KJK	89/76/89	2,8 KGM	1		STK
52630KKK	89/89/89	3,083 KGM	1		STK
52630LIL	108/67/108	4,4 KGM	1		STK
52630LLL	108/108/108	4,414 KGM	1		STK





COF440 Kupfer Press-T-Stück



Art.-Nr.	Bezeichnung	d1 mm	d2 mm	d3 mm	L1 mm	L2 mm	L3 mm	z1 mm	z2 mm	z3 mm
52630BBB	15/15/15	15	15	15	32	32	32	12	12	12
52630BCB	15/18/15	15	18	15	35	32	23	15	12	35
52630BDB	15/22/15	15	22	15	38	34	23	18	13	38
52630CBB	18/15/15	18	15	15	34	35	40	14	15	20
52630CBC	18/15/18	18	15	18	34	35	34	14	15	14
52630CCB	18/18/15	18	18	15	34	34	42	14	14	22
52630CCC	18/18/18	18	18	18	34	34	34	14	14	14
52630DBB	22/15/15	22	15	15	37	44	43	16	18	23
52630DBD	22/15/22	22	15	22	37	38	37	16	18	16
52630DCC	22/18/18	22	18	18	37	38	41	16	18	21
52630DCD	22/18/22	22	18	22	37	38	37	16	18	16
52630DDB	22/22/15	22	22	15	37	37	46	16	16	26
52630DDC	22/22/18	22	22	18	37	37	43	16	16	23
52630DDD	22/22/22	22	22	22	37	37	37	16	16	16
52630DED	22/28/22	22	28	22	52	42	52	31	19	31
52630EBE	28/15/28	28	15	28	42	41	42	19	21	19
52630ECE	28/18/28	28	18	28	42	41	42	19	21	19
52630EDD	28/22/22	28	22	22	42	41	49	19	20	28





COF440 Kupfer Press-T-Stück

Art.-Nr.	Bezeichnung	d1 mm	d2 mm	d3 mm	L1 mm	L2 mm	L3 mm	z1 mm	z2 mm	z3 mm
52630EDE	28/22/28	28	22	28	42	41	42	19	20	19
52630EED	28/28/22	28	28	22	42	42	52	19	19	31
52630EEE	28/28/28	28	28	28	42	42	42	19	19	19
52630FBF	35/15/35	35	15	35	45	44	45	19	24	19
52630FDF	35/22/35	35	22	35	45	45	45	19	24	19
52630FEE	35/28/28	35	28	28	51	44	67	25	21	44
52630FEF	35/28/35	35	28	35	50	44	50	24	21	24
52630FFF	35/35/35	35	35	35	50	50	50	24	24	24
52630GBG	42/15/42	42	15	42	50	48	50	20	28	20
52630GDG	42/22/42	42	22	42	50	48	50	20	27	20
52630GEG	42/28/42	42	28	42	56	49	56	26	26	26
52630GFF	42/35/35	42	35	35	56	50	74	26	24	48
52630GFG	42/35/42	42	35	42	56	50	56	26	24	26
52630GGG	42/42/42	42	42	42	58	58	58	28	28	28
52630HDH	54/22/54	54	22	54	60	54	60	25	33	25
52630HEH	54/28/54	54	28	54	60	55	60	25	32	25
52630HFH	54/35/54	54	35	54	61	55	61	24	29	24
52630HGG	54/42/42	54	42	42	69	64	83	34	34	53
52630HGH	54/42/54	54	42	54	69	64	69	34	34	34
52630HHH	54/54/54	54	54	54	69	69	69	34	34	34
52630IFI	67/35/67	66.7	35	66.7	80	70	80	29	43	29
52630IGI	67/42/67	66.7	42	66.7	82	76	82	32	41	32
52630IHI	67/54/67	66.7	54	66.7	88	78	88	47	43	47
52630III	67/67/67	66.7	66.7	66.7	95	111	95	45	62	45
52630JDJ	76/22/76	76.1	22	76.1	73	73	73	22	50	22
52630JEJ	76/28/76	76.1	28	76.1	77	73	77	26	50	26
52630JFJ	76/35/76	76.1	35	76.1	80	78	80	30	53	30
52630JGJ	76/42/76	76.1	42	76.1	103	106	103	55	70	55
52630JHJ	76/54/76	76.1	54	76.1	93	85	93	41	50	41
52630JJJ	76/76/76	76.1	76.1	76.1	101	119	101	51	69	51
52630KHK	89/54/89	88.9	54	88.9	136	119	136	77	77	77
52630KJK	89/76/89	88.9	76.1	88.9	151	146	151	91	96	91
52630KKK	89/89/89	88.9	88.9	88.9	162	162	162	100	100	100
52630LIL	108/67/108	108	66.7	108	117	141	117	46	96	46
52630LLL	108/108/108	108	108	108	159	159	159	92	92	92

