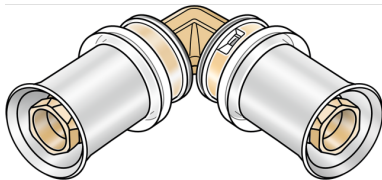


KELOX

KMW420 KELOX-ULTRAX-W elbow 90° 16

71304BB0

Areas of application



?Zeta value-optimised press-fit elbow 90°, for changing direction with a minimal radius, made from dezincification-resistant (DZR) brass, including support sleeves with O-rings and stainless steel press-fit sleeves "leak before pressed", audible leakage signal at air-pressure testing

Approvals:



Specifications

Article information

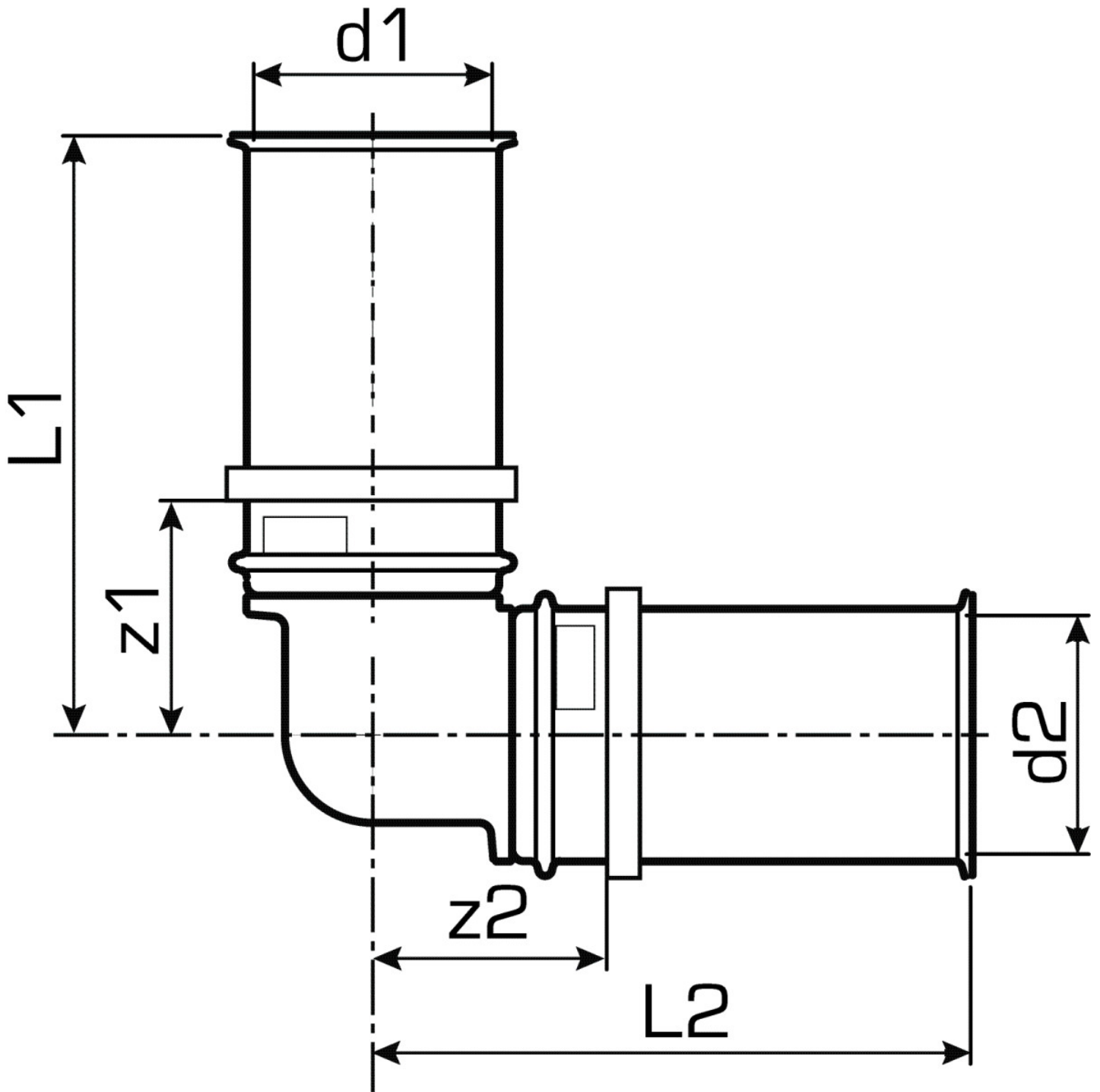
| | |
|---------------|------------|
| port 1 | Pressmuffe |
| port 2 | Pressmuffe |
| design | Winkel |
| angle | 90 ° |
| press contour | U |

Technical properties

| | |
|------------------------------------|--------|
| maximum working pressure at 20 ° C | 16 bar |
|------------------------------------|--------|

Product information

| | |
|---------------------|--------------------------|
| VPE1 | 10,00 SA1 |
| VPE2 | 80,00 KT1 |
| VPE3 | 6400,00 PAL |
| weight | 0,059 KGM |
| text | KELOX-ULTRAX-W elbow 90° |
| INTRNR | 74122000 |
| main material group | KELOX |
| code | KMW420 |



| Art. No | label | d1 mm | d2 mm | L1 mm | L2 mm | z1 mm | z2 mm |
|----------|-------|-------|-------|-------|-------|-------|-------|
| 71304BB0 | 16 | 16 | 16 | 42 | 42 | 17 | 17 |