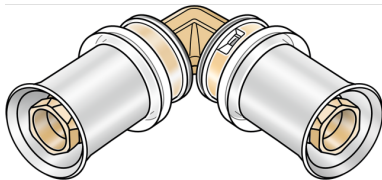


# KELOX

## KMW420 KELOX-ULTRAX-W elbow 90° 32

71304FF0

### Areas of application



?Zeta value-optimised press-fit elbow 90°, for changing direction with a minimal radius, made from dezincification-resistant (DZR) brass, including support sleeves with O-rings and stainless steel press-fit sleeves "leak before pressed", audible leakage signal at air-pressure testing

### Approvals:



# Specifications

## Article information

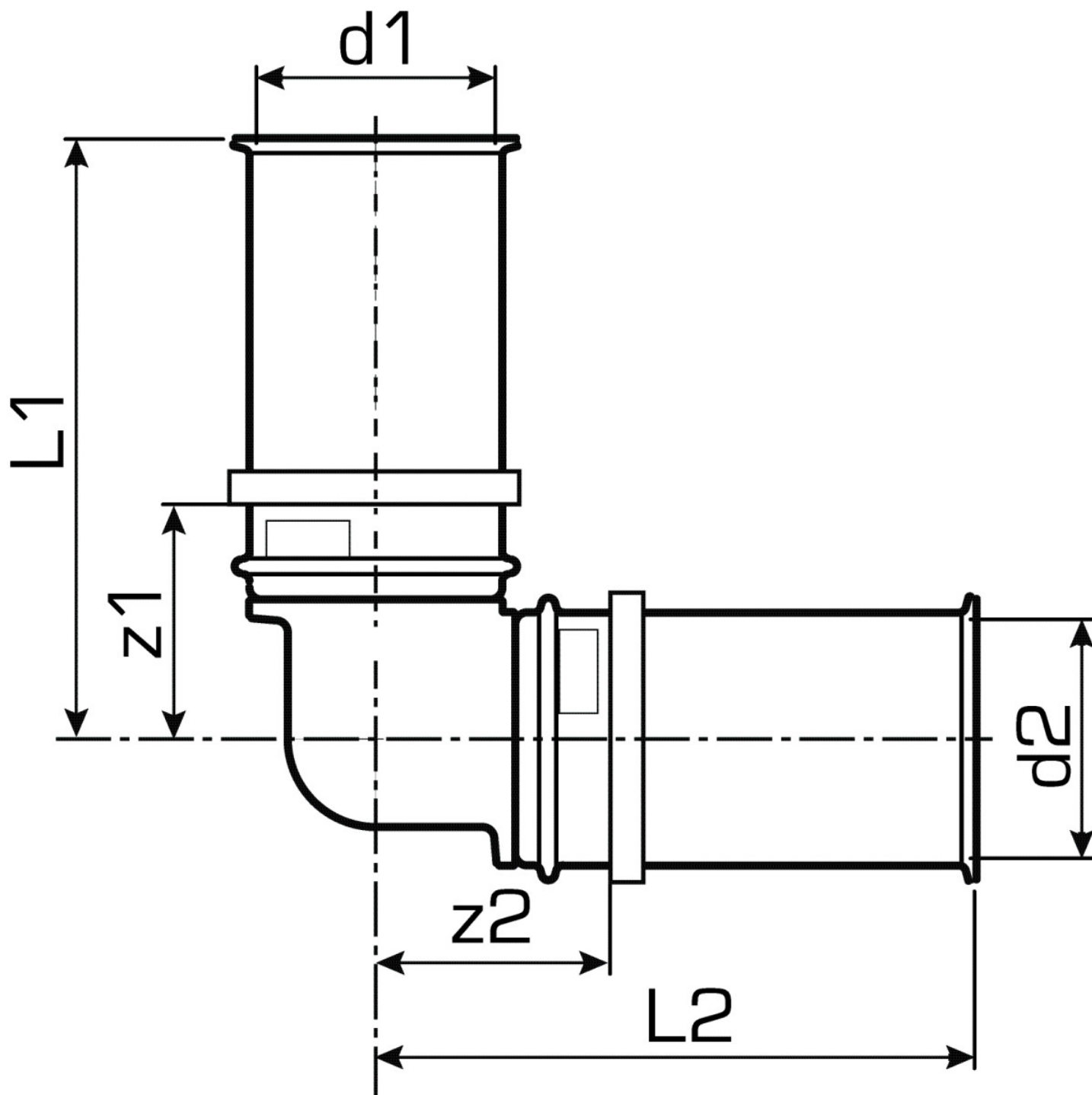
port 1	Pressmuffe
port 2	Pressmuffe
design	Winkel
angle	90 °
press contour	U

## Technical properties

maximum working pressure at 20 ° C	16 bar
------------------------------------	--------

## Product information

VPE1	5,00 SA1
VPE2	20,00 KT1
VPE3	1600,00 PAL
weight	0,211 KGM
text	KELOX-ULTRAX-W elbow 90°
INTRNR	74122000
main material group	KELOX
code	KMW420



Art. No	label	d1 mm	d2 mm	L1 mm	L2 mm	z1 mm	z2 mm
71304FF0	32	32	32	56	56	26	26