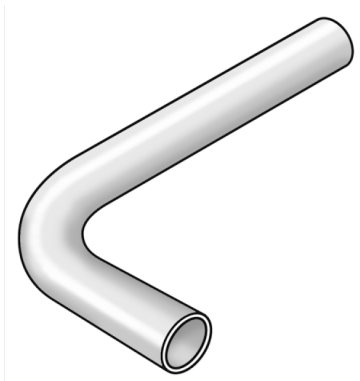


# STEEL FIX C-STAHL

CP422 C-Steel press-elbow 90° male/male 15

54617BB0

## Areas of application



Elbow 90° male/male made of C-steel, coated with a zinc layer

Dimensions:

d15-22 - 120x70mm

d28 - 120x80mm

d35 - 200x120mm

d42 - 250x150mm

d54 - 300x200mm

# Specifications

## Article information

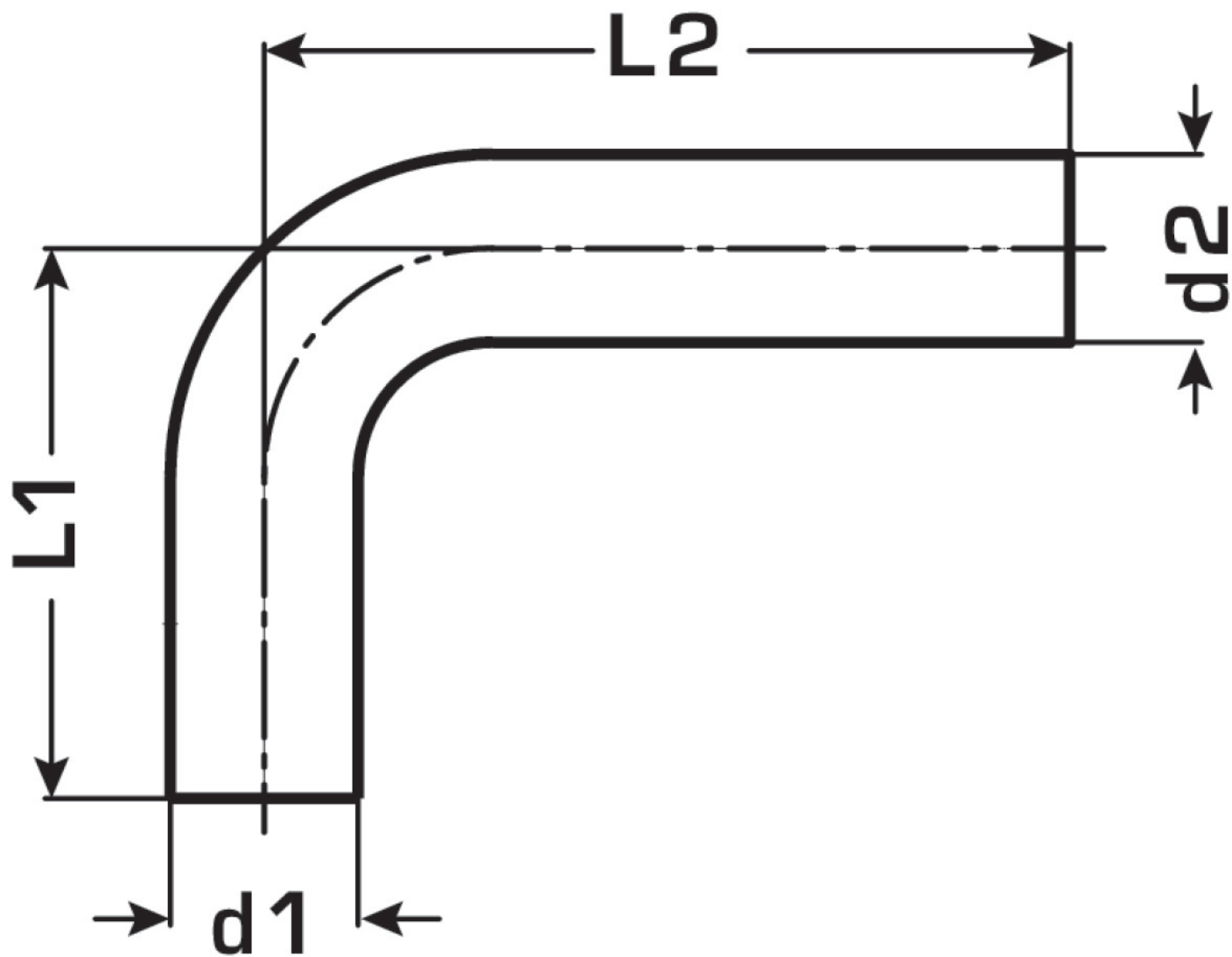
port 1	Zapfen/Rohrende
port 2	Zapfen/Rohrende
execution	1-teilig
design	Bogen
angle	90 °

## Technical properties

maximum working pressure at 20 ° C	16 bar
------------------------------------	--------

## Product information

VPE1	10 SA1
VPE2	70 KT1
VPE3	1750 DDP
weight	0,098 KGM
text	C-Steel press-elbow 90° male/male
INTRNR	73079980
main material group	STEELFIX
material group	C-STAHL pressfittings
code	CP422



Art. No	label	d1 mm	d2 mm	L1 mm	L2 mm	z1 mm
54617BB0	15	15	15	72	122	52