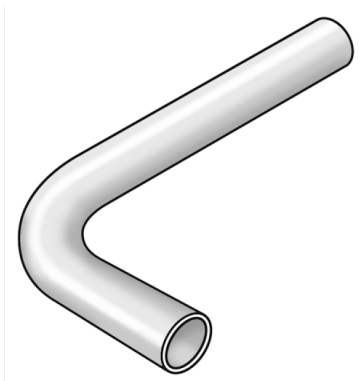


STEEL FIX C-STAHl

CP422 C-Steel press-elbow 90° male/male 35

54617FF0

Areas of application



Elbow 90° male/male made of C-steel, coated with a zinc layer

Dimensions:

d15-22 - 120x70mm

d28 - 120x80mm

d35 - 200x120mm

d42 - 250x150mm

d54 - 300x200mm

Specifications

Article information

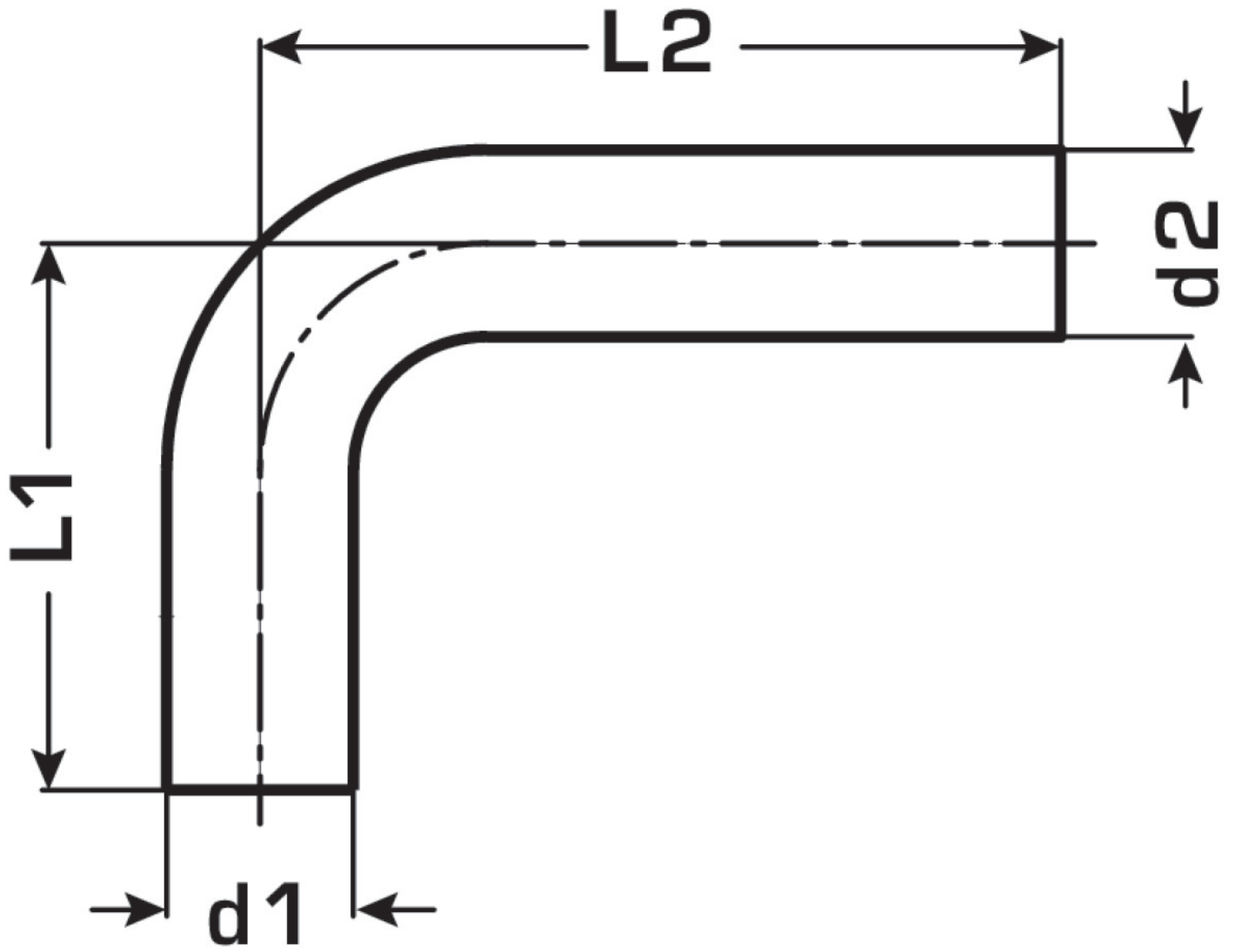
| | |
|-----------|-----------------|
| port 1 | Zapfen/Rohrende |
| port 2 | Zapfen/Rohrende |
| execution | 1-teilig |
| design | Bogen |
| angle | 90 ° |

Technical properties

| | |
|------------------------------------|--------|
| maximum working pressure at 20 ° C | 16 bar |
|------------------------------------|--------|

Product information

| | |
|---------------------|-----------------------------------|
| VPE1 | 4 SA1 |
| VPE2 | 8 KT1 |
| VPE3 | 200 DDP |
| weight | 0,471 KGM |
| text | C-Steel press-elbow 90° male/male |
| INTRNR | 73079980 |
| main material group | STEELFIX |
| material group | C-STAHL pressfittings |
| code | CP422 |



| Art. No | label | d1 mm | d2 mm | L1 mm | L2 mm | z1 mm |
|----------|-------|-------|-------|-------|-------|-------|
| 54617FF0 | 35 | 35 | 35 | 122 | 202 | 96 |