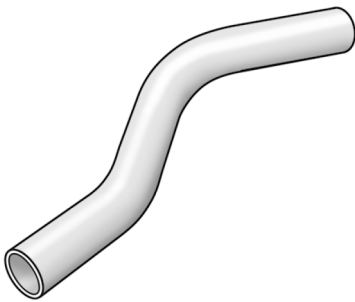


STEEL FIX C-STAHl

CP427 C-Steel curved pipe male/male 18

54623CC0

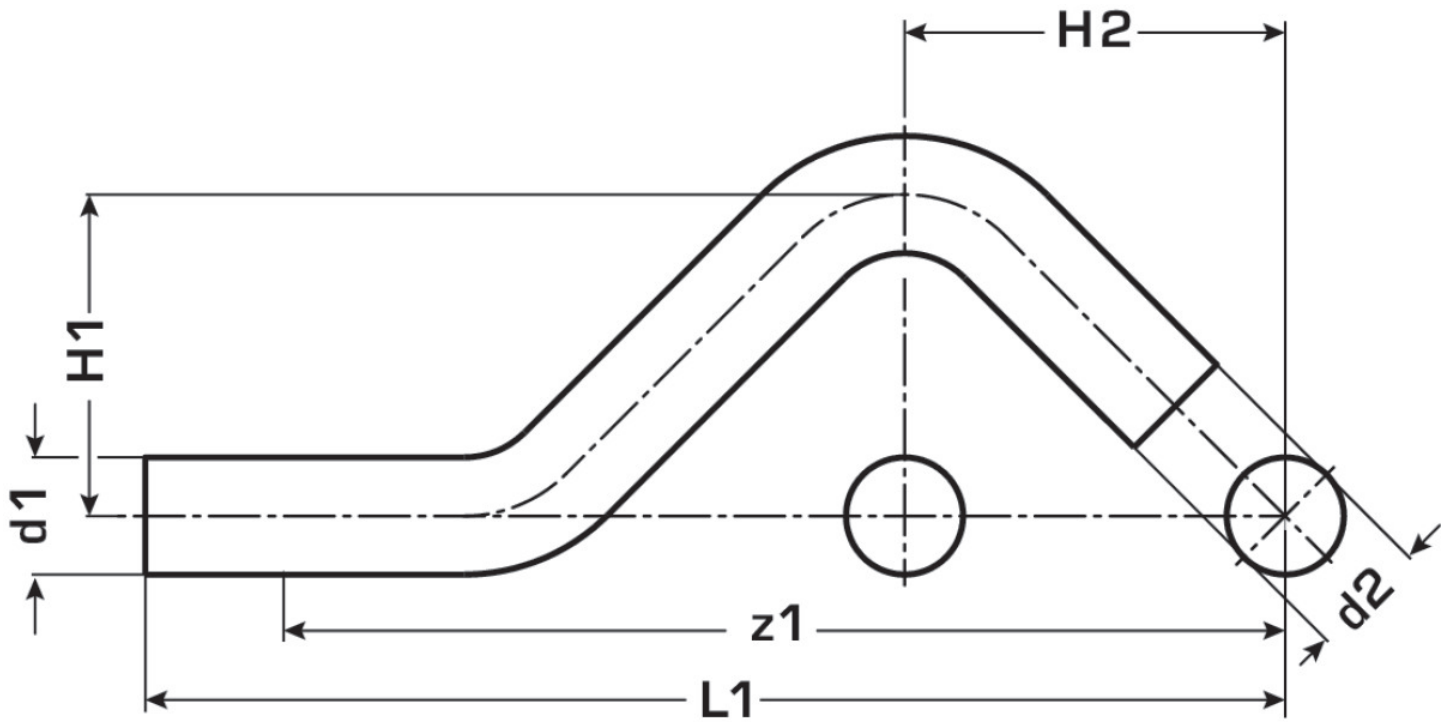
Areas of application



Curved pipe for parallel lines m/m made of C-steel coated with a zinc layer

Specifications

Product information	
VPE1	10 SA1
VPE2	60 KT1
VPE3	1500 DDP
weight	0,095 KGM
text	C-Steel curved pipe male/male
INTRNR	73079980
main material group	STEELFIX
material group	C-STAHl pressfittings
code	CP427



Art. No	label	d1 mm	d2 mm	L1 mm	z1 mm
54623CC0	18	18	18	165	145