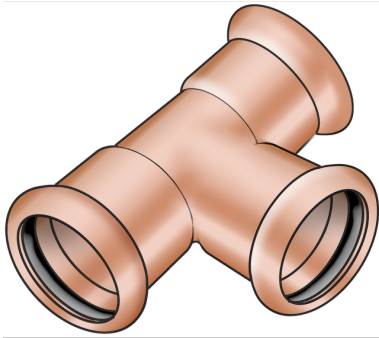


# COPPER FIX

COF440 COPPERFIX copper press-tee  
108/67/108

52630LIL

## Areas of application



Press-tee equal or reduced made of copper, incl. EPDM sealing components, "leak before pressed"

Press contour: M

## Approvals:



# Specifications

## Article information

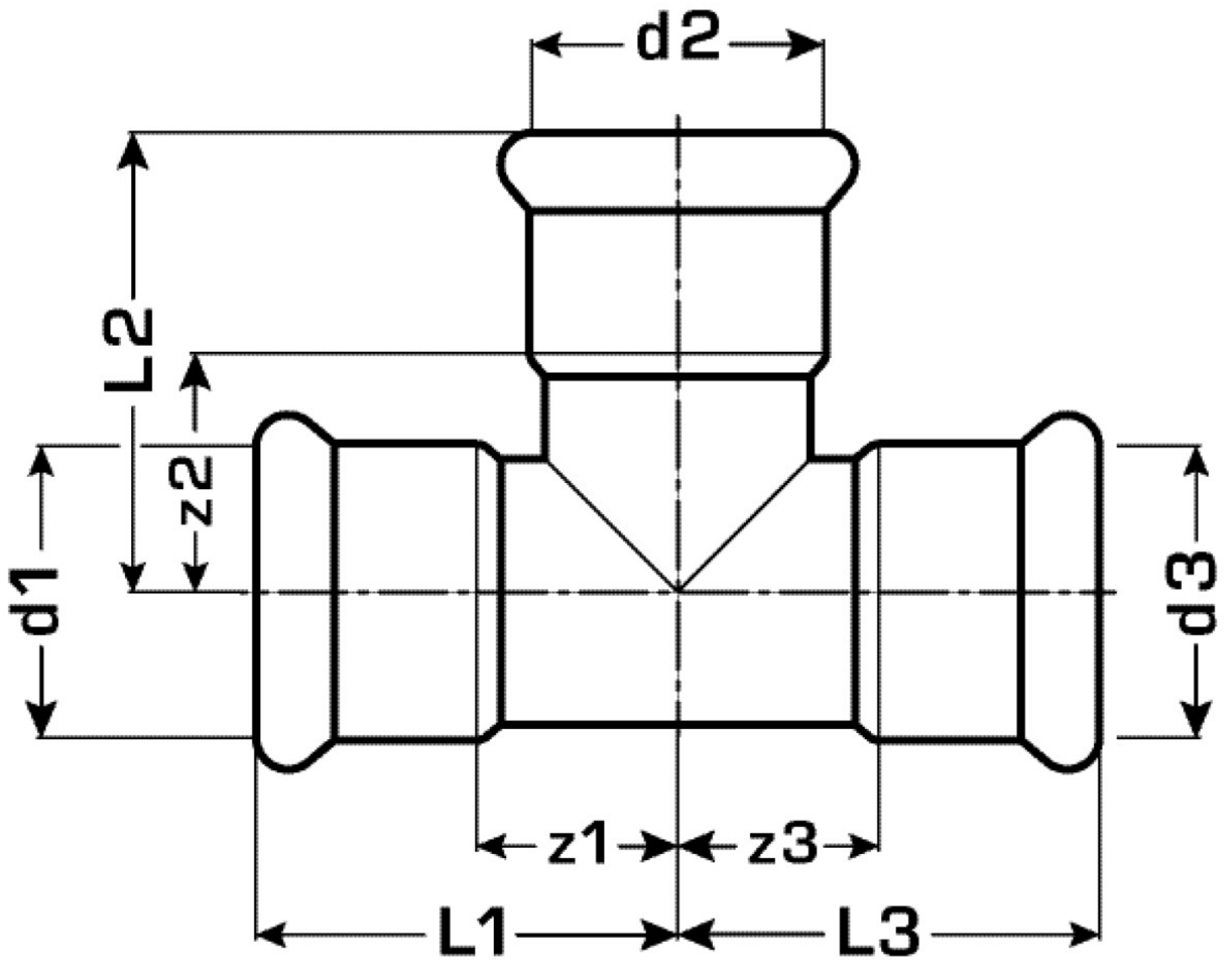
port 1	Pressmuffe
port 2	Pressmuffe
port 3	Pressmuffe
execution	T-Stück
angle	90 °
press contour	M

## Technical properties

maximum working pressure at 20 ° C	16 bar
------------------------------------	--------

## Product information

VPE1	1,00 SA1
VPE2	4,00 KT1
weight	4,400 KGM
text	COPPERFIX copper press-tee
INTRNR	74122000
main material group	COPPERFIX
material group	KUPFER pressfittings
code	COF440



Art. No	label	d1 mm	d2 mm	d3 mm	L1 mm	L2 mm	L3 mm	z1 mm	z2 mm	z3 mm
52630LIL	108/67/10	108	66,7	108	117	141	117	46	96	46