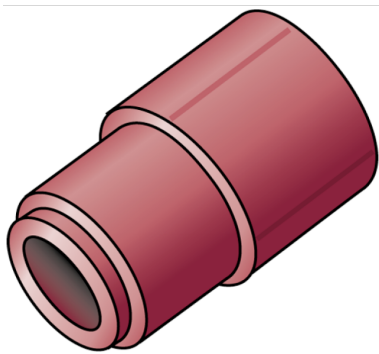


KETRIX

TRI41 KETRIX reducer male/female 63/40

55116IG0

Areas of application



KETRIX polyfusion weld fitting for connecting POB pipes to fittings made of the same material without narrowing the cross section

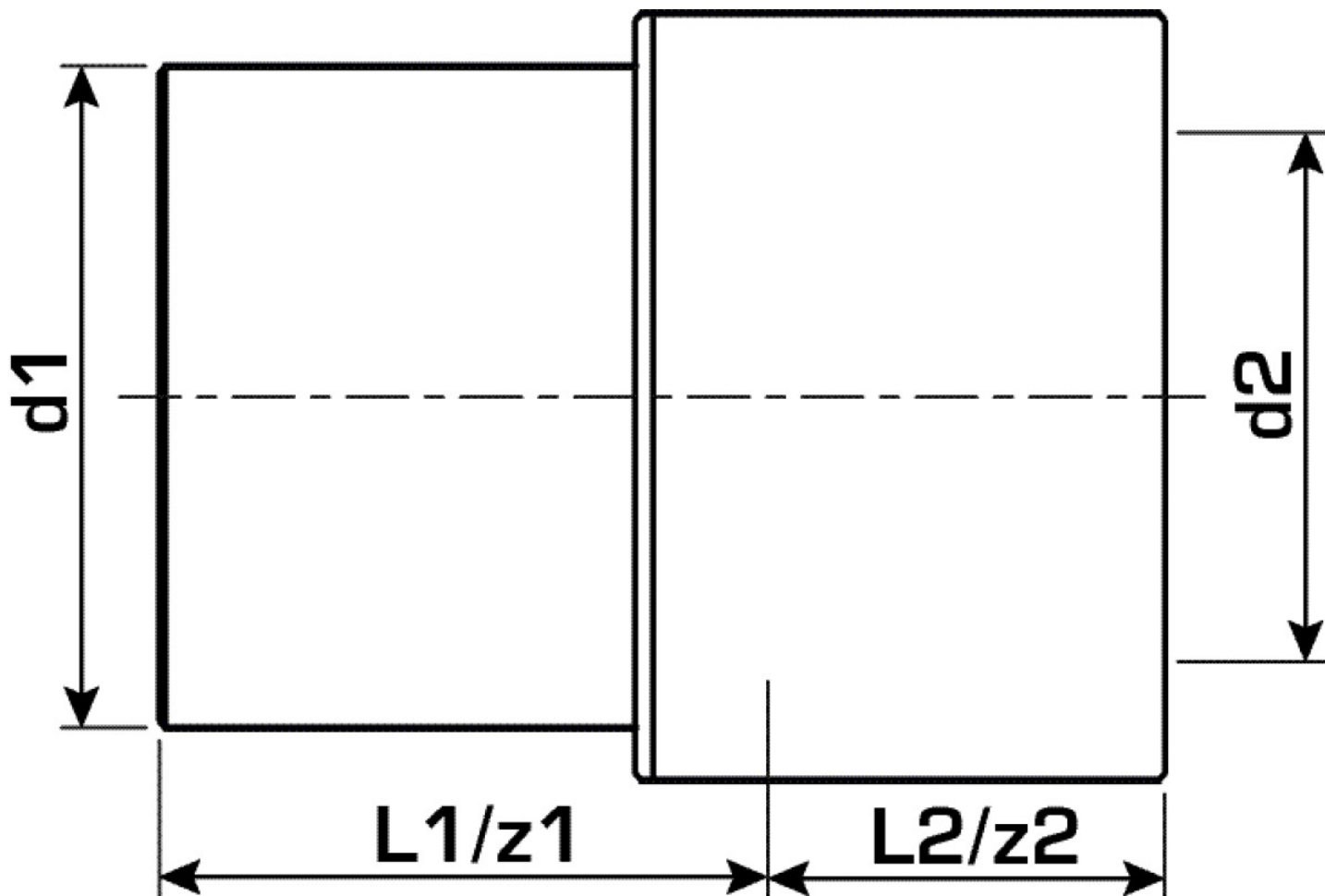
Specifications

Article information

| | |
|------------------|------------------------|
| port 1 | Plastic welding socket |
| port 2 | Plastic welding socket |
| execution | 1-part |
| design | Straight |

Product information

| | |
|----------------------------|----------------------------|
| VPE1 | 1,00 SA1 |
| VPE2 | 16,00 KT1 |
| VPE3 | 96,00 KT2 |
| VPE4 | 1536,00 PAL |
| weight | 0,165 KGM |
| text | KETRIX reducer male/female |
| INTRNR | 39174000 |
| main material group | KETRIX |
| material group | KETRIX plastic fittings |
| code | TRI41 |



| Art. No | label | d1 mm | d2 | L1 mm | L2 mm | z1 mm | z2 mm |
|----------|-------|-------|----|-------|-------|-------|-------|
| 55116IG0 | 63/40 | 63 | 40 | 65 | 28 | 65 | 28 |