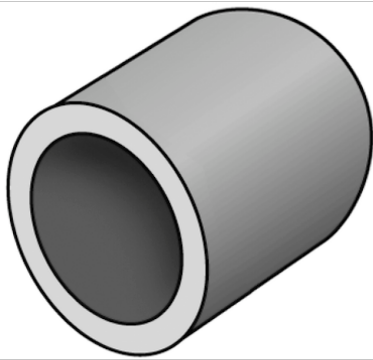


LEXEL

LX60 LEXEL insertion guide cap 17-18

5800030

Areas of application



To insert at the pipe ends, as insertion aid

Specifications

Product information

VPE1	10,00 SA1
weight	0,003 KGM
text	LEXEL insertion guide cap
INTRNR	39259080
main material group	LEXEL
material group	LEXEL isolation and accessories
code	LX60



Art. No	label
5800030	17-18



KE KELIT GmbH

A 4020 Linz, Ignaz-Mayer-Straße 17, Austria, Europe

PHONE +43 (0) 50 779 **E-MAIL** office@kekelit.com

www.kekelit.com