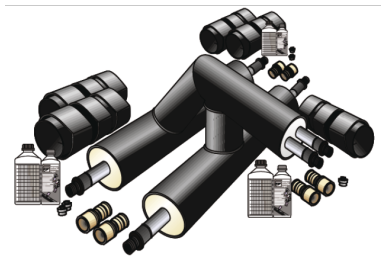


# KELIT PEX

## KELIT PEX to DUO-PEX pre-ins. branch IS 1 63/25+25/63

3020495552

### Areas of application



Pre-insulated, welded steel tee pieces, equal or reduced, single PEX pipe in the flow and PEX-DUO pipes in the branch, 90° tiered (please state the outlet direction when ordering), INCLUDING 6 welded-on (PEX13) medium pipe connections and 5 (PEX40 or PEX45) jacket pipe coupling sleeves

Overall length: 1000 x 500 mm

ATTENTION: THESE ARE NOT EX-STOCK ITEMS!

Dimensions d125 and d140 mm on request!

15% extra charge for insulation series 2



KE KELIT GmbH

A 4020 Linz, Ignaz-Mayer-Straße 17, Austria, Europe

PHONE +43 (0) 50 779 E-MAIL [office@kekelit.com](mailto:office@kekelit.com)

[www.kekelit.com](http://www.kekelit.com)

# Specifications

## Product information

**text** KELIT PEX to DUO-PEX pre-ins. branch IS 1

## Art. No

3020495552

## label

63/25+25/63



**KE KELIT GmbH**

A 4020 Linz, Ignaz-Mayer-Straße 17, Austria, Europe

**PHONE** +43 (0) 50 779 **E-MAIL** [office@kekelit.com](mailto:office@kekelit.com)

[www.kekelit.com](http://www.kekelit.com)