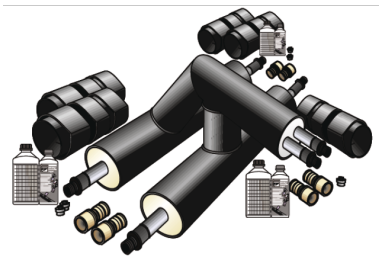


# KELIT PEX

## KELIT PEX to DUO-PEX pre-ins. branch IS 1 90/32+32/90

3020495606

### Areas of application



Pre-insulated, welded steel tee pieces, equal or reduced, single PEX pipe in the flow and PEX-DUO pipes in the branch, 90° tiered (please state the outlet direction when ordering), INCLUDING 6 welded-on (PEX13) medium pipe connections and 5 (PEX40 or PEX45) jacket pipe coupling sleeves

Overall length: 1000 x 500 mm

ATTENTION: THESE ARE NOT EX-STOCK ITEMS!

Dimensions d125 and d140 mm on request!

15% extra charge for insulation series 2

# Specifications

## Product information

**text** KELIT PEX to DUO-PEX pre-ins. branch IS 1

## Art. No

3020495606

## label

90/32+32/90



**KE KELIT GmbH**

A 4020 Linz, Ignaz-Mayer-Straße 17, Austria, Europe

**PHONE** +43 (0) 50 779 **E-MAIL** [office@kekelit.com](mailto:office@kekelit.com)

[www.kekelit.com](http://www.kekelit.com)