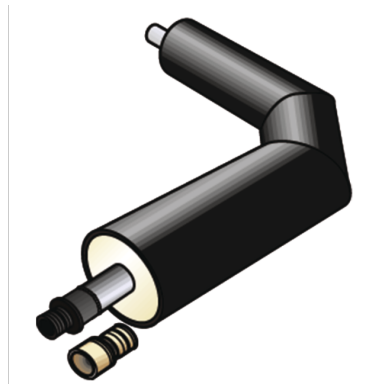


KELIT PEX

KELIT PEX pre-insulated riser elbow 90° insulation series 2 DN20/d25

3020715

Areas of application



Pre-insulated ST 37.0, welded steel elbow, INCLUDING PEX13 medium pipe connection welded-on on one side, WITHOUT jacket pipe connection; the values shown in brackets represent the actual, construction-dependent jacket pipe outside diameter!

It may be necessary to use (PEX45) reducing sleeves to connect the pipe to the elbow!

Leg length: 1000 x 1000mm

Dimensions d125 and d140 mm on request!

Specifications

Product information

text KELIT PEX pre-insulated riser elbow 90° insulation series 2

Art. No

3020715

label

DN20/d25