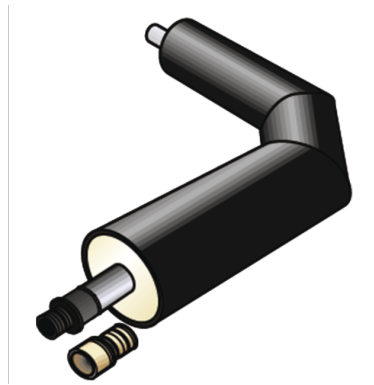


KELIT PEX

KELIT PEX pre-insulated riser elbow 90° insulation series 2 DN25/d32

3020725

Areas of application



Pre-insulated ST 37.0, welded steel elbow, INCLUDING PEX13 medium pipe connection welded-on on one side, WITHOUT jacket pipe connection; the values shown in brackets represent the actual, construction-dependent jacket pipe outside diameter!

It may be necessary to use (PEX45) reducing sleeves to connect the pipe to the elbow!

Leg length: 1000 x 1000mm

Dimensions d125 and d140 mm on request!

Specifications

Product information

text KELIT PEX pre-insulated riser elbow 90° insulation series 2

Art. No

3020725

label

DN25/d32



KE KELIT GmbH

A 4020 Linz, Ignaz-Mayer-Straße 17, Austria, Europe

PHONE +43 (0) 50 779 **E-MAIL** office@kekelit.com

www.kekelit.com