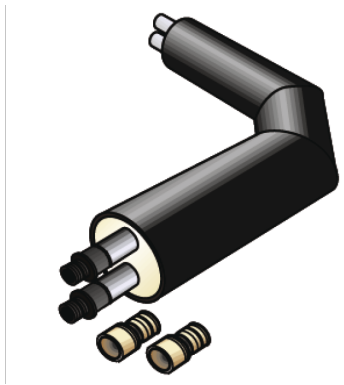


KELIT PEX

KELIT DUO-PEX pre-ins. elbow 90° IS 2 DN25/d32+32

3020727

Areas of application



Pre-insulated welded PEX elbows, INCLUDING PEX13 medium pipe connections welded-on on one side, WITHOUT jacket pipe connection; the values shown in brackets represent the actual, construction-dependent jacket pipe outside diameter!

It may be necessary to use (PEX45) reducing sleeves to connect the pipe to the elbow!

Leg length: 1000 x 1000mm

Specifications

Product information

text KELIT DUO-PEX pre-ins. elbow 90° IS 2

Art. No

3020727

label

DN25/d32+32



KE KELIT GmbH

A 4020 Linz, Ignaz-Mayer-Straße 17, Austria, Europe

PHONE +43 (0) 50 779 **E-MAIL** office@kekelit.com

www.kekelit.com