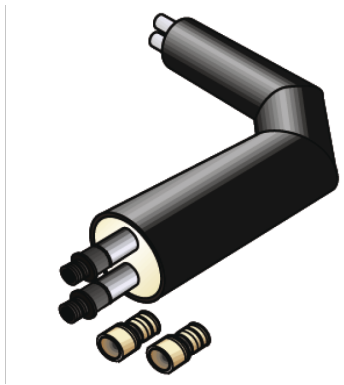


# KELIT PEX

## KELIT DUO-PEX pre-ins. elbow 90° IS 2 DN32/d40+40

3020737

### Areas of application



Pre-insulated welded PEX elbows, INCLUDING PEX13 medium pipe connections welded-on on one side, WITHOUT jacket pipe connection; the values shown in brackets represent the actual, construction-dependent jacket pipe outside diameter!

It may be necessary to use (PEX45) reducing sleeves to connect the pipe to the elbow!

Leg length: 1000 x 1000mm

# Specifications

## Product information

**text** KELIT DUO-PEX pre-ins. elbow 90° IS 2

## Art. No

3020737

## label

DN32/d40+40



**KE KELIT GmbH**

A 4020 Linz, Ignaz-Mayer-Straße 17, Austria, Europe

**PHONE** +43 (0) 50 779 **E-MAIL** [office@kekelit.com](mailto:office@kekelit.com)

[www.kekelit.com](http://www.kekelit.com)