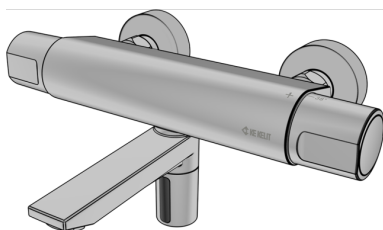


KETRON

KET165 KETRON wall-mounted washbasin tap,
surface-mounted communication box 260mm
commbox

21801660

Areas of application



Contactless, electronically controlled surface-mounted wall-mounted washbasin tap, high pressure with infrared sensor, hygiene flushing programme and thermostatic mixer. With temperature barrier max. 43°C, can be converted to max. 38°C. Thermal flushing can be carried out by unlocking the thermostat. Surface chrome-plated, operating pressure: 0.3 - 10 bar - max. 80°C. Inside micrometer 150mm, 3/4" connection with flat seal, with S connections G1/2" male thread to G3/4" male thread. Battery operated. With KET950 communication box for app compatibility, demand-driven hygiene flushing, protocol function for recording usage and hygiene flushing, simplified configuration. The length of the projection is indicated.



KE KELIT GmbH

A 4020 Linz, Ignaz-Mayer-Straße 17, Austria, Europe

PHONE +43 (0) 50 779 **E-MAIL** office@kekelit.com

www.kekelit.com

Specifications

Product information

VPE1	1,00 KT1
weight	4,300 KGM
text	KETRON wall-mounted washbasin tap, surface-mounted communication box
INTRNR	84818011
code	KET165

Art. No	label
21801660	260mm commbox