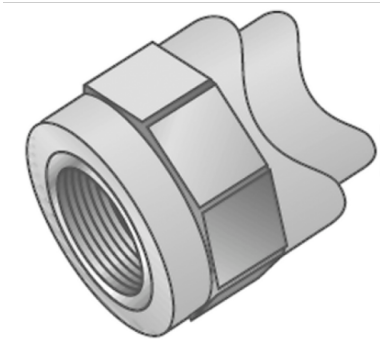


# KELEN

## KE43 KELEN saddle fitting female 63-125x1/2"

2475051

### Areas of application



KELEN polyfusion weld fitting for connecting pipes with fittings made of the same material without narrowing the cross-section, injected female thread made of dezincification-resistant non-porous metallised brass, threads conform to DIN EN 10226. For welding directly to pipelines that have already been installed; the welding is carried out with a WZ124 saddle welding tool  
Do NOT connect to threaded pipes or to cast iron fittings!

### Approvals:



KE KELIT GmbH

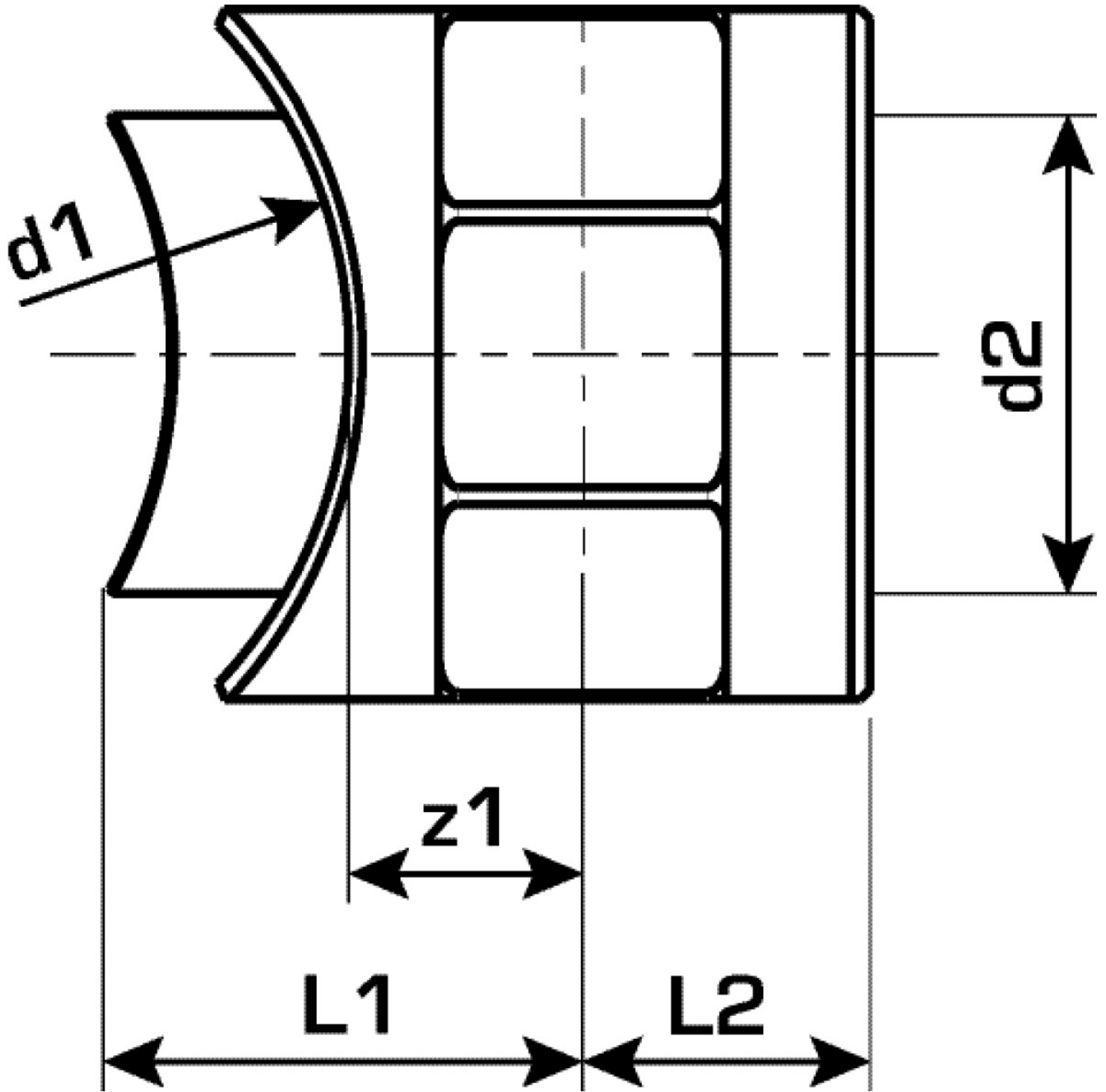
A 4020 Linz, Ignaz-Mayer-Straße 17, Austria, Europe

PHONE +43 (0) 50 779 E-MAIL [office@kekELIT.com](mailto:office@kekELIT.com)

[www.kekELIT.com](http://www.kekELIT.com)

# Specifications

| Product information |                             |
|---------------------|-----------------------------|
| VPE1                | 5,00 SA1                    |
| VPE2                | 80,00 KT1                   |
| VPE3                | 320,00 KT2                  |
| VPE4                | 7680,00 PAL                 |
| weight              | 0,069 KGM                   |
| text                | KELEN saddle fitting female |
| INTRNR              | 39174000                    |
| main material group | KELEN                       |
| material group      | KELEN metal fittings        |
| code                | KE43                        |



| Art. No | label       | d         | L2 mm | z1 mm |
|---------|-------------|-----------|-------|-------|
| 2475051 | 63-125x1/2" | 1/2" (15) | 15    | 13    |