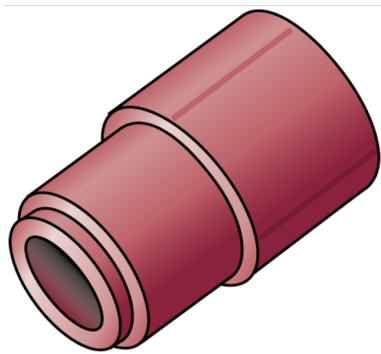


# KETRIX

## TRI41 KETRIX reducer male/female 25/20

55116ED0

### Areas of application



KETRIX polyfusion weld fitting for connecting POB pipes to fittings made of the same material without narrowing the cross section

# Specifications

## Article information

port 1	Plastic welding socket
port 2	Plastic welding socket
execution	1-part
design	Straight

## Product information

VPE1	10,00 SA1
VPE2	200,00 KT1
VPE3	1200,00 KT2
VPE4	19200,00 PAL
weight	0,012 KGM
text	KETRIX reducer male/female
INTRNR	39174000
main material group	KETRIX
material group	KETRIX plastic fittings
code	TRI41



Art. No	label	d2 Inches	d1 mm	d2	L1 mm	L2 mm	z1 mm	z2 mm
55116ED0	25/20	1/2" (15)	25	20	22	16	22	16