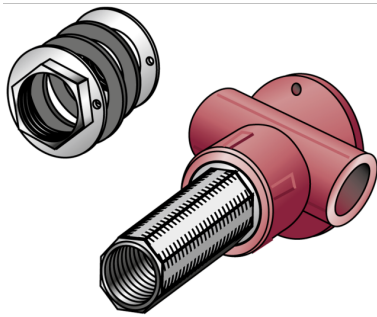


KETRIX

TRI33HA KETRIX hollow wall connection tee with female thread 20x1/2"x50

55221DA2

Areas of application



KETRIX polyfusion weld fitting for connecting POB pipes with fittings made of the same material without narrowing the cross section, with injected female thread made of dezincification-resistant brass and non-porous metal-plating, thread conforms to ÖNORM EN 10226, extended on the metal side by 50mm with M28mm male thread, octagonal version, seal and 2 lock nuts
Do NOT connect to threaded pipes or to cast iron fittings!

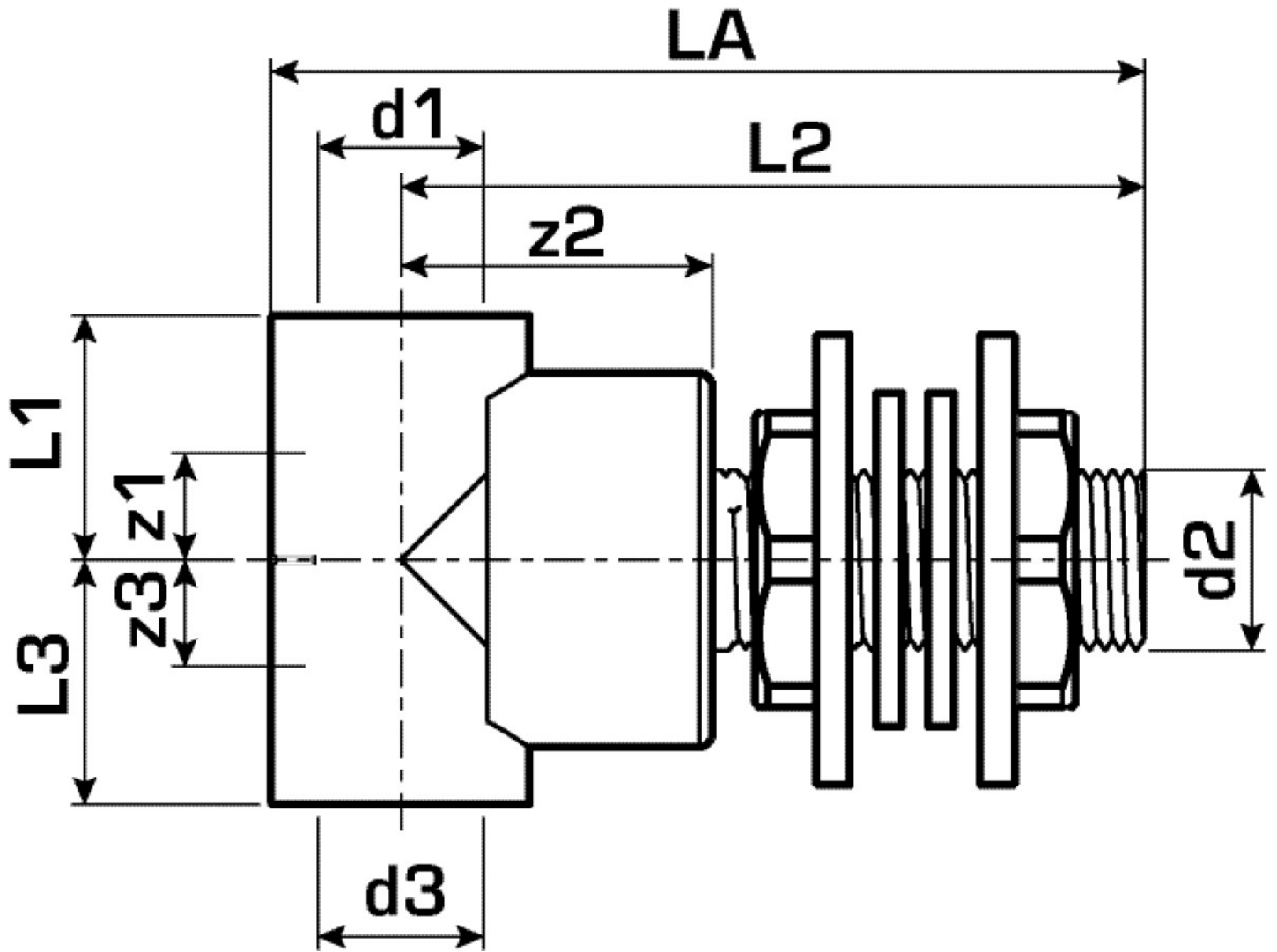
Specifications

Technical properties

maximum working pressure at 20 ° C 16 bar

Product information

VPE1	5,00 SA1
VPE2	30,00 KT1
VPE3	120,00 KT2
VPE4	2880,00 PAL
weight	0,303 KGM
text	KETRIX hollow wall connection tee with female thread
INTRNR	39174000
main material group	KETRIX
material group	KETRIX metal fittings
code	TRI33HA



Art. No	label
55221DA2	20x1/2"x50