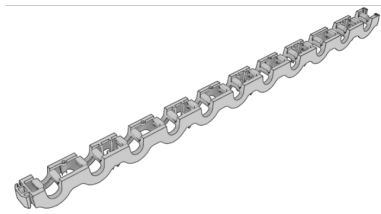


CLIMATE FIX

KC610B CLIMATEFIX near surface thermal activated concrete clamping rail 16 large pack

6353065

Areas of application



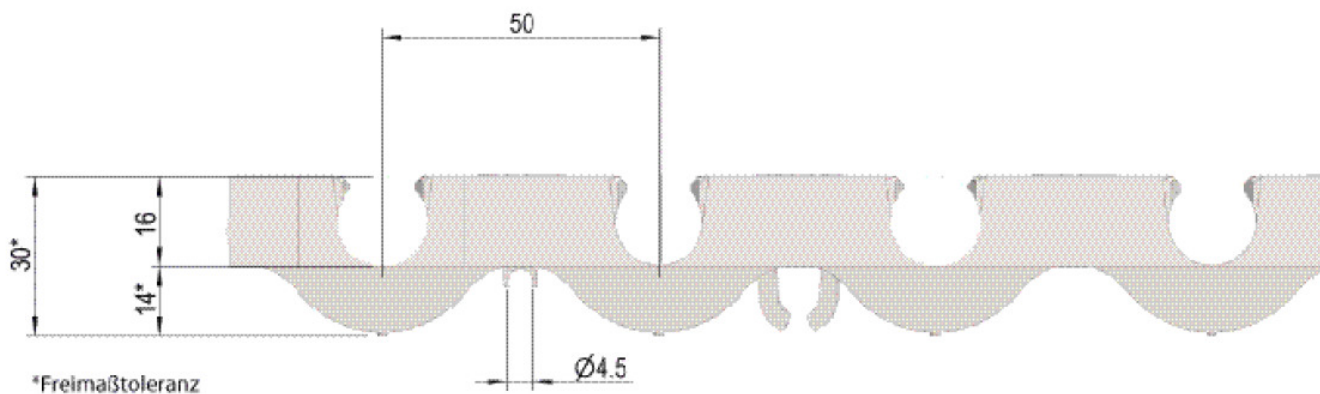
PP clamping rail (recycled granulate, colour may differ), with self-clamping pipe fastening for pipes d16mm in 50mm spacing or optional 4.5mm pipe, endlessly expandable through a push fitting, fastening option with optionally KC611 stainless steel nails.

d16: L: 0.55m W: 30mm H: 30mm

Specifications

Product information

| | |
|---------------------|------------------------------------------------------------------|
| VPE1 | 182,00 KT1 |
| VPE2 | 2912,00 PAL |
| L | 0,55 |
| weight | 0,098 KGM |
| text | CLIMATEFIX near surface thermal activated concrete clamping rail |
| INTRNR | 39161000 |
| main material group | CLIMATEFIX |
| material group | CLIMATEFIX fittings |
| code | KC610B |



| Art. No | label |
|---------|---------------|
| 6353065 | 16 large pack |