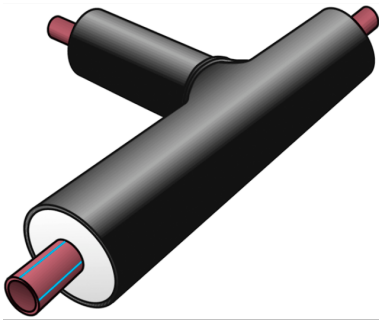


TRI2030 KETRIX-PE tee 110x15.1

3019590

Areas of application



Pre-insulated industrial tee, equal

Medium pipe: d20-125 = TRI08, adhesion-pretreated

Medium pipe: d160 = TRI02, adhesion-pretreated

Insulation: PUR rigid foam

Jacket pipe: PE-HD

also available as reduced version!

Leg length: 500 x 500 x 500mm, other leg lengths available on request!

Specifications

Product information

| | |
|----------------------------|---------------------------------|
| casing DA | 225 |
| VPE1 | 1,00 STK |
| weight | 13,640 KGM |
| text | KETRIX-PE tee |
| INTRNR | 39174000 |
| main material group | KETRIX CX/PE |
| material group | KETRIX CX/PE pipes and fittings |
| code | TRI2030 |

| Art. No | label |
|----------------|--------------|
| 3019590 | 110x15.1 |