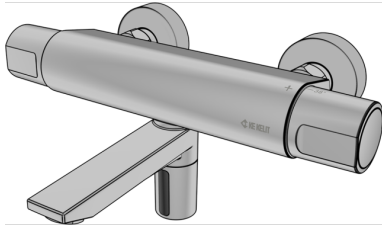


# KETRON

KET160 KETRON wall-mounted washbasin tap,  
surface-mounted 200mm

21801600

## Areas of application



Contactless, electronically controlled surface-mounted wall-mounted washbasin tap, high pressure with infrared sensor and thermostat mixer. With temperature barrier max. 43°C, can be converted to max. 38°C. Thermal flushing can be carried out by unlocking the thermostat. Surface chrome-plated, operating pressure: 0.3 - 10 bar - max. 80°C. Inside micrometer 150mm, 3/4" connection with flat seal, with S connections G1/2" male thread on G3/4" male thread, projection 200mm. Battery operated. The length of the projection is indicated.

# Specifications

Product information	
VPE1	1,00 KT1
weight	4,300 KGM
text	KETRON wall-mounted washbasin tap, surface-mounted
INTRNR	84818011
code	KET160

Art. No	label
21801600	200mm