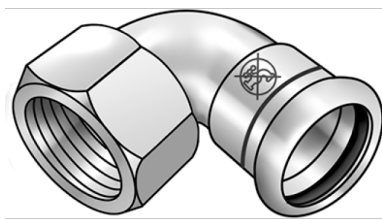


# STEEL FIX EDELSTAHL

NPI467 STEELFIX industrial stainless steel press-fit adapter elbow 90° with female thread 28x1"

53816E05

## Areas of application



Press-elbow adapter 90° with female thread made of stainless steel 1.4301, incl. EPDM sealing elements, d15-54 "leak before pressed"

Press contour: M

ATTENTION: NOT suitable for drinking water!

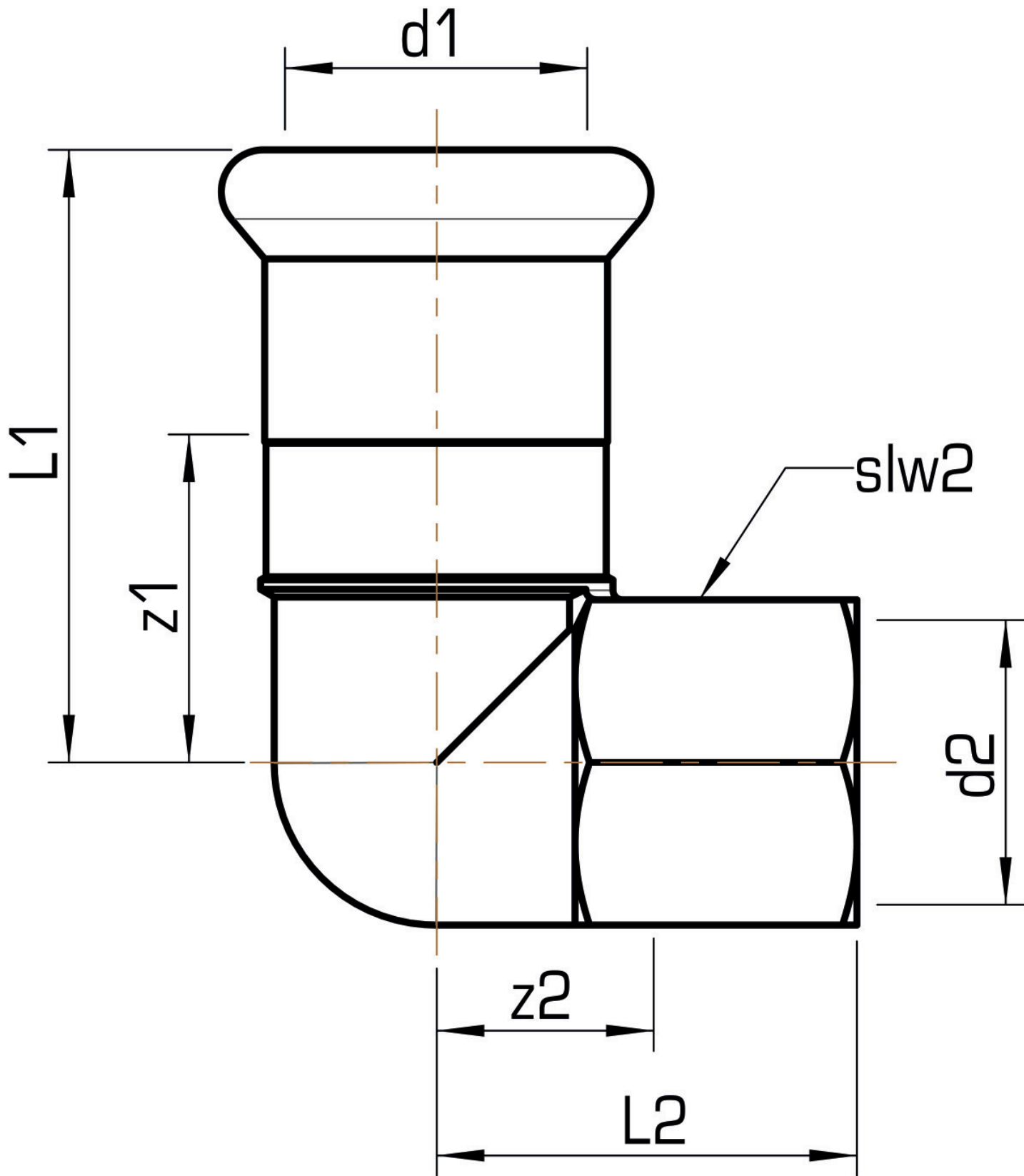
# Specifications

## Article information

port 1	Pressmuffe
port 2	Innengewinde zylindrisch BSPT-Rp (ISO 7-1 / EN 10226-1)
execution	1-teilig
design	Bogen
angle	90 °
press contour	M

## Product information

VPE1	10,00 SA1
VPE2	30,00 KT1
VPE3	750,00 PAL
weight	0,260 KGM
text	STEELFIX industrial stainless steel press-fit adapter elbow 90° with female thread
INTRNR	73072980
code	NPI467



Art. No	label	d2 Zoll	d1 mm	L1 mm	L2 mm	z1 mm	z2 mm	slw2 mm
53816E05	28x1"	1 Zoll (25)	28	54,5	37	31,5	17,5	38



**KE KELIT GmbH**

A 4020 Linz, Ignaz-Mayer-Straße 17, Austria, Europe

**PHONE** +43 (0) 50 779 **E-MAIL** office@kekelit.com

www.kekelit.com