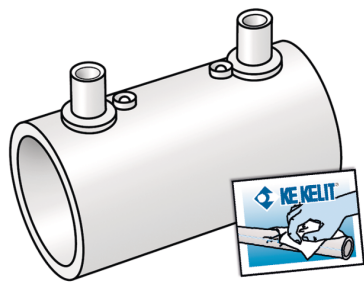


# KELEN

## KE17 KELIT PP E welding socket 50

2533511

### Areas of application



KELIT Electro - welding socket with barcode, incl. cleaning tissue and installation guidelines d20 - 160mm, can be welded with WZ140 E-socket welding machine as of 2021 or commonly commercially available E-welding device equipped with barcode reader

Colour: grey

### Approvals:



KE KELIT GmbH

A 4020 Linz, Ignaz-Mayer-Straße 17, Austria, Europe

PHONE +43 (0) 50 779 E-MAIL [office@kekelit.com](mailto:office@kekelit.com)

[www.kekelit.com](http://www.kekelit.com)

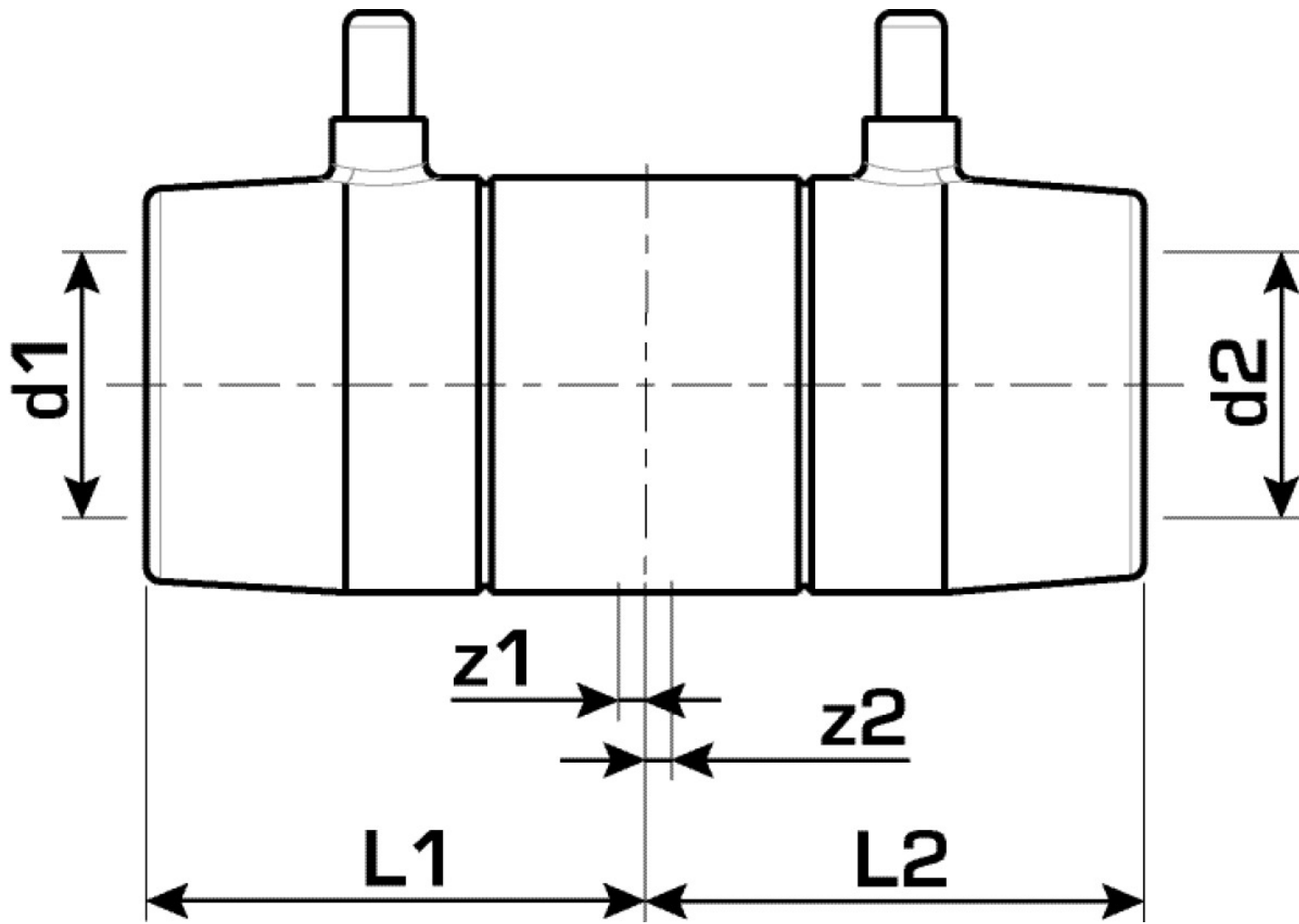
# Specifications

## Article information

port 1	Kunststoffschweißmuffe
port 2	Kunststoffschweißmuffe
design	gerade
press contour	universal

## Product information

VPE1	1,00 SA1
VPE2	10,00 KT1
VPE3	60,00 KT2
VPE4	960,00 PAL
weight	0,150 KGM
text	KELIT PP E welding socket
INTRNR	39174000
main material group	KELEN
material group	KELEN plastic fittings
code	KE17



Art. No	label	d1 mm	d2 mm	L1 mm	L2 mm	z1 mm
2533511	50	50	50	57	55	5