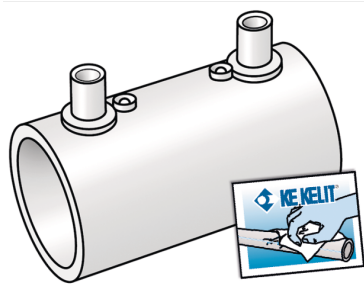


KELEN

KE17 KELIT PP E welding socket 63

2534011

Areas of application



KELIT Electro - welding socket with barcode, incl. cleaning tissue and installation guidelines d20 - 160mm, can be welded with WZ140 E-socket welding machine as of 2021 or commonly commercially available E-welding device equipped with barcode reader

Colour: grey

Approvals:



KE KELIT GmbH

A 4020 Linz, Ignaz-Mayer-Straße 17, Austria, Europe

PHONE +43 (0) 50 779 E-MAIL office@kekelit.com

www.kekelit.com

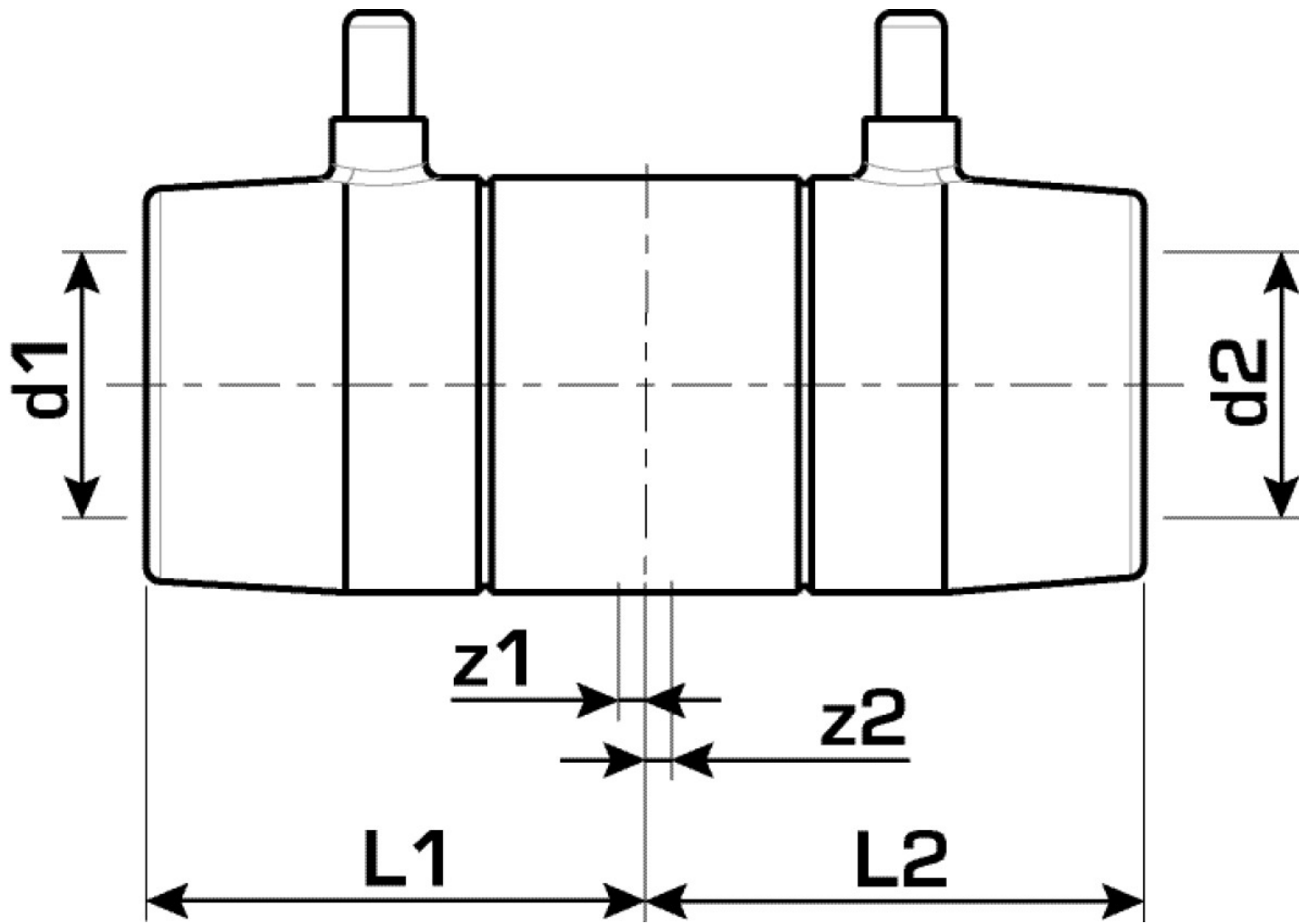
Specifications

Article information

port 1	Kunststoffschweißmuffe
port 2	Kunststoffschweißmuffe
design	gerade
press contour	universal

Product information

VPE1	1,00 SA1
VPE2	8,00 KT1
VPE3	48,00 KT2
VPE4	768,00 PAL
weight	0,230 KGM
text	KELIT PP E welding socket
INTRNR	39174000
main material group	KELEN
material group	KELEN plastic fittings
code	KE17



Art. No	label	d1 mm	d2 mm	L1 mm	L2 mm	z1 mm
2534011	63	63	63	65	63	5