

# KELEN

## KE33HA KELEN PP-RCT hollow wall tee female branch 20x1/2"x50BF

2633701

### Areas of application



KELEN PP-RCT Polyfusion welding fitting for connecting pipes with fittings made of the same material (no reduction of internal diameter), with injected female thread made of dezincification-resistant brass, non-porous metal plating, thread conforms to ÖNORM EN 10226, on the metal side extended by 50mm with male thread M28mm, octagonal version, seal and 2 lock nuts  
Do NOT connect to threaded pipes or to cast iron fittings!

## Approvals:



# Specifications

## Article information

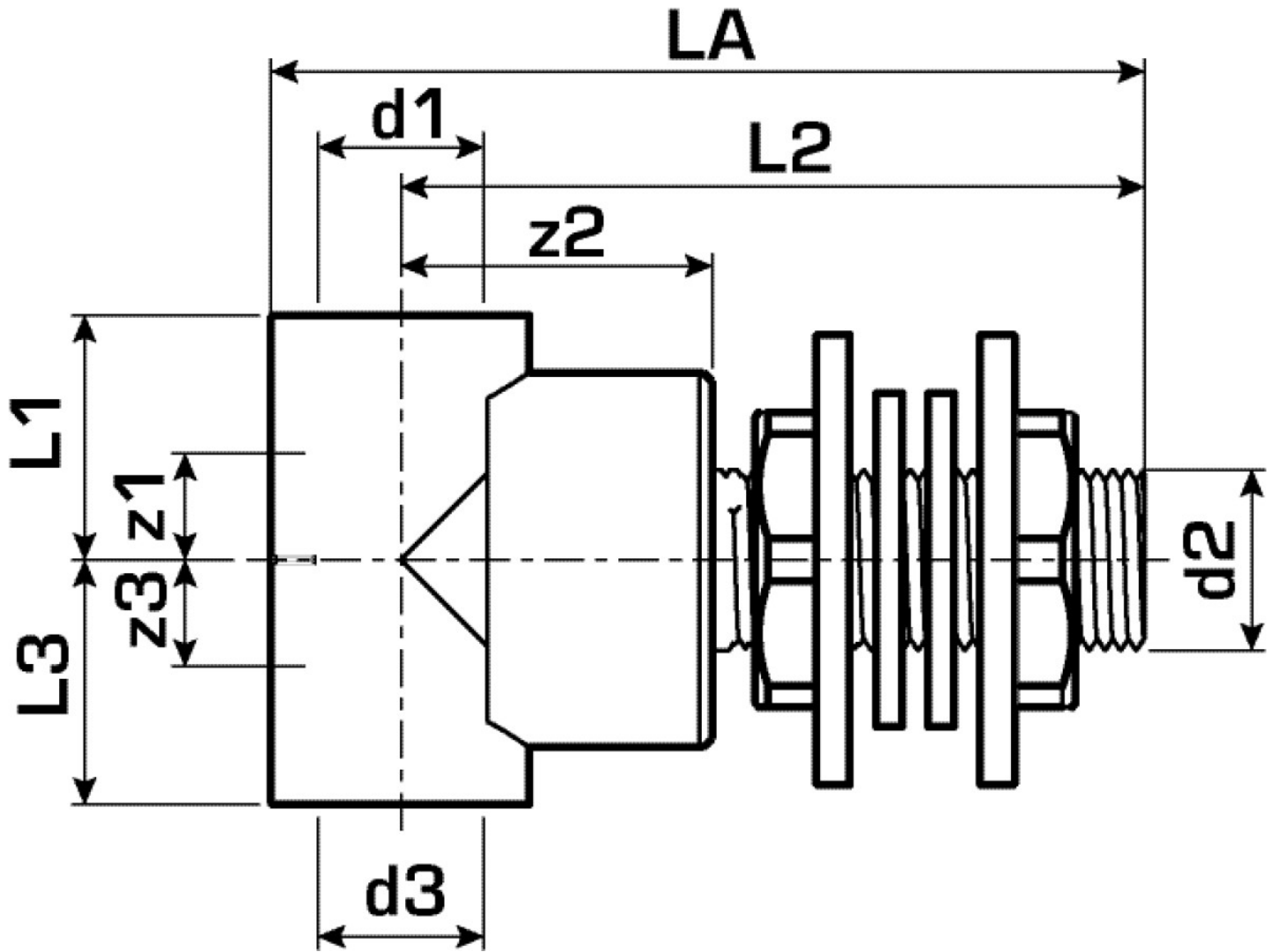
port 1	Kunststoffschweißmuffe
port 3	Kunststoffschweißmuffe
execution	T-Stück
angle	90 °

## Technical properties

maximum working pressure at 20 ° C	20 bar
------------------------------------	--------

## Product information

VPE1	5,00 SA1
VPE2	30,00 KT1
VPE3	120,00 KT2
VPE4	2880,00 PAL
weight	0,030 KGM
text	KELEN PP-RCT hollow wall tee female branch
INTRNR	39174000
main material group	KELEN
material group	KELEN metal fittings
code	KE33HA



Art. No	label	d2	d1 mm	d3 mm	L1 mm	L1 mm	L2 mm	L3 mm	z1 mm	z2 mm	z3 mm
2633701	20x1/2"x!	1/2" (15)	20	20	100	28	84,5	28	12	34,5	12