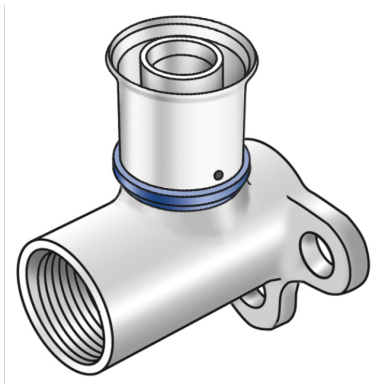


KELOX

KMU480 KELOX-ULTRAX wall bracket fitting 90° female 20x3/4"

71250D04

Areas of application



Press-fit wall bracket fitting with female thread made from non-porous metallised brass; including support sleeves with O-rings and stainless steel press-fit sleeves, "leak before pressed"

Overall height:

1/2" - 46mm

d20x3/4" - 49mm

d25x3/4" - 56mm

DO NOT screw in threaded pipes and cast iron fittings!

Approvals:



Specifications

Article information

| | |
|---------------|---------------------------|
| port 1 | Pressing socket |
| design | Continuously right-angled |
| press contour | U |

Technical properties

| | |
|------------------------------------|----|
| maximum working pressure at 20 ° C | 10 |
|------------------------------------|----|

Product information

| | |
|---------------------|--|
| VPE1 | 10,00 SA1 |
| VPE2 | 80,00 KT1 |
| weight | 0,148 KGM |
| text | KELOX-ULTRAX wall bracket fitting 90° female |
| INTRNR | 74122000 |
| main material group | KELOX |
| material group | KELOX-ULTRAX metal fittings |
| code | KMU480 |



| Art. No | label | d1 mm | L1 mm | L2 | L3 mm | z1 mm | z2 | z3 mm |
|----------|---------|-------|-------|----|-------|-------|----|-------|
| 71250D04 | 20x3/4" | 20 | 46 | 34 | 29 | 20,5 | 17 | 9 |