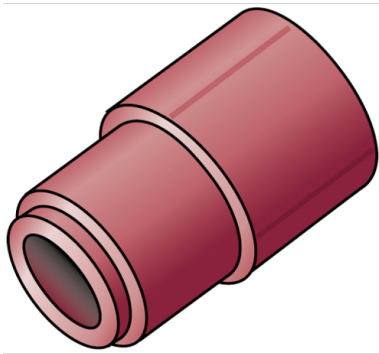


# KETRIX

## TRI41 KETRIX reducer male/female 32/20

55116FD0

### Areas of application



KETRIX polyfusion weld fitting for connecting POB pipes to fittings made of the same material without narrowing the cross section

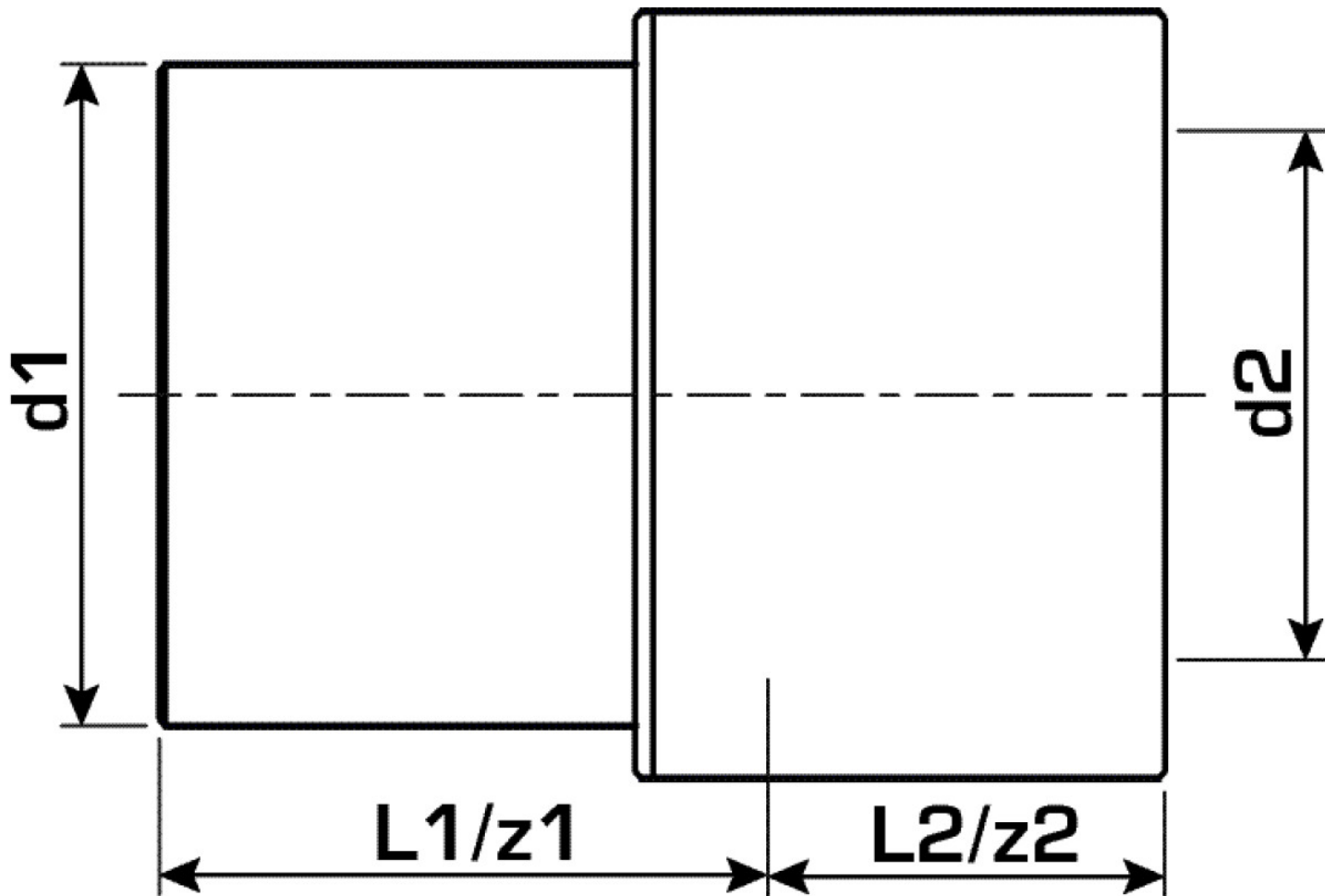
# Specifications

## Article information

<b>port 1</b>	Plastic welding socket
<b>port 2</b>	Plastic welding socket
<b>execution</b>	1-part
<b>design</b>	Straight

## Product information

<b>VPE1</b>	10,00 SA1
<b>VPE2</b>	120,00 KT1
<b>VPE3</b>	720,00 KT2
<b>VPE4</b>	11520,00 PAL
<b>weight</b>	0,020 KGM
<b>text</b>	KETRIX reducer male/female
<b>INTRNR</b>	39174000
<b>main material group</b>	KETRIX
<b>material group</b>	KETRIX plastic fittings
<b>code</b>	TRI41



Art. No	label	d2 Inches	d1 mm	d2	L1 mm	L2 mm	z1 mm	z2 mm
55116FD0	32/20	3/4" (20)	32	20	26	17	26	17