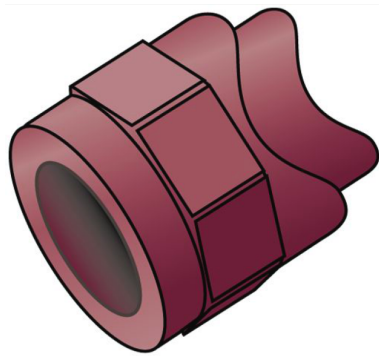


KETRIX

TRI47 KETRIX saddle fitting 63-125x20

55118KD0

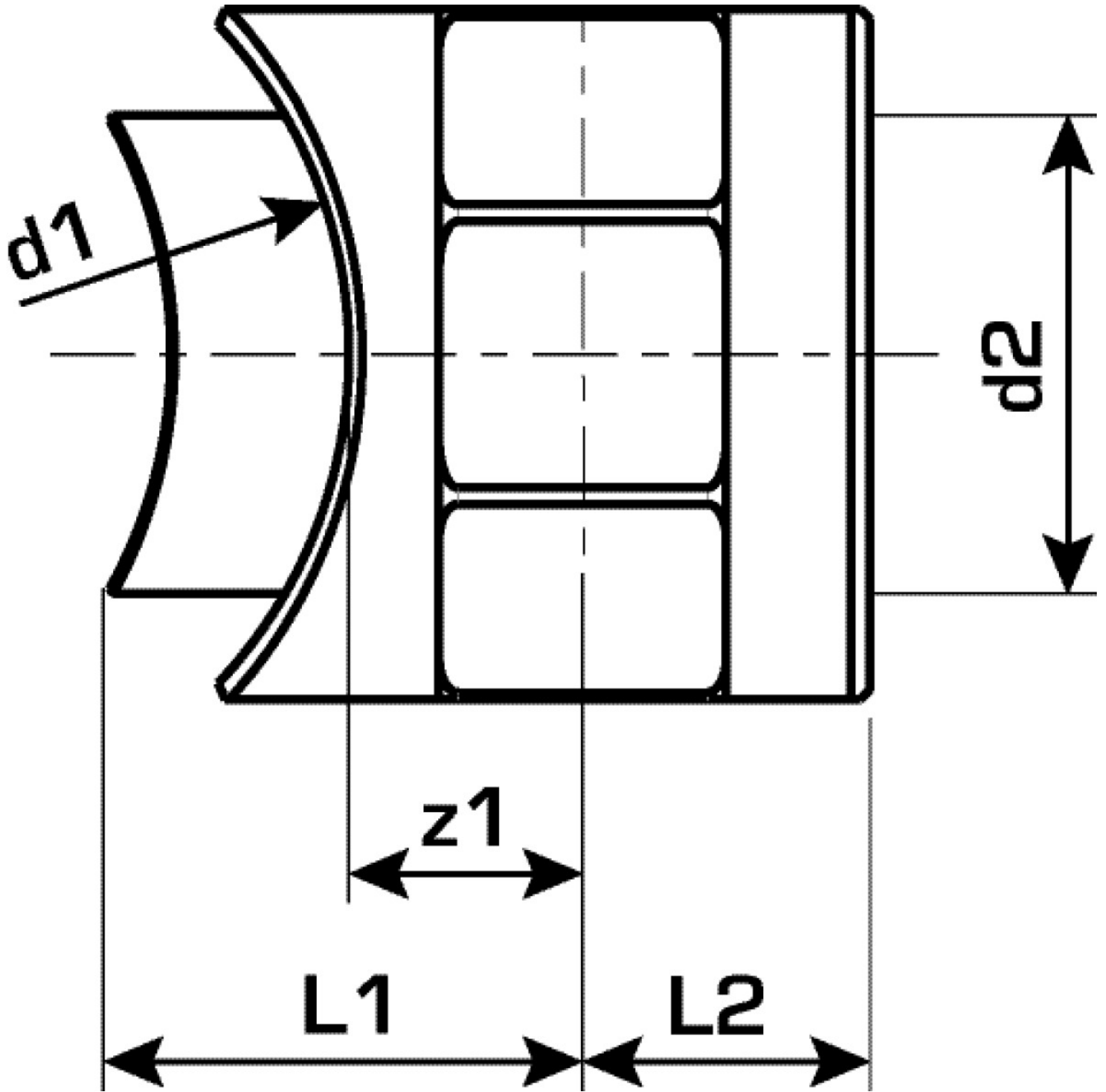
Areas of application



KETRIX polyfusion weld fitting for connecting POB pipes to fittings made of the same material without narrowing the cross section. For welding directly to pipelines that have already been installed; the welding is carried out with a WZ124 saddle welding tool

Specifications

Product information	
VPE1	5,00 SA1
VPE2	100,00 KT1
VPE3	600,00 KT2
VPE4	9600,00 PAL
weight	0,024 KGM
text	KETRIX saddle fitting
INTRNR	39174000
main material group	KETRIX
material group	KETRIX plastic fittings
code	TRI47



Art. No	label	d1 mm	L2 mm	z1 mm
55118KDO	63-125x20	20	15	13