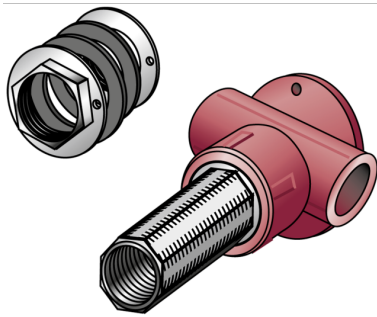


# KETRIX

## TRI33HA KETRIX hollow wall connection tee with female thread 20x1/2"x50

55221DA2

### Areas of application



KETRIX polyfusion weld fitting for connecting POB pipes with fittings made of the same material without narrowing the cross section, with injected female thread made of dezincification-resistant brass and non-porous metal-plating, thread conforms to ÖNORM EN 10226, extended on the metal side by 50mm with M28mm male thread, octagonal version, seal and 2 lock nuts  
Do NOT connect to threaded pipes or to cast iron fittings!

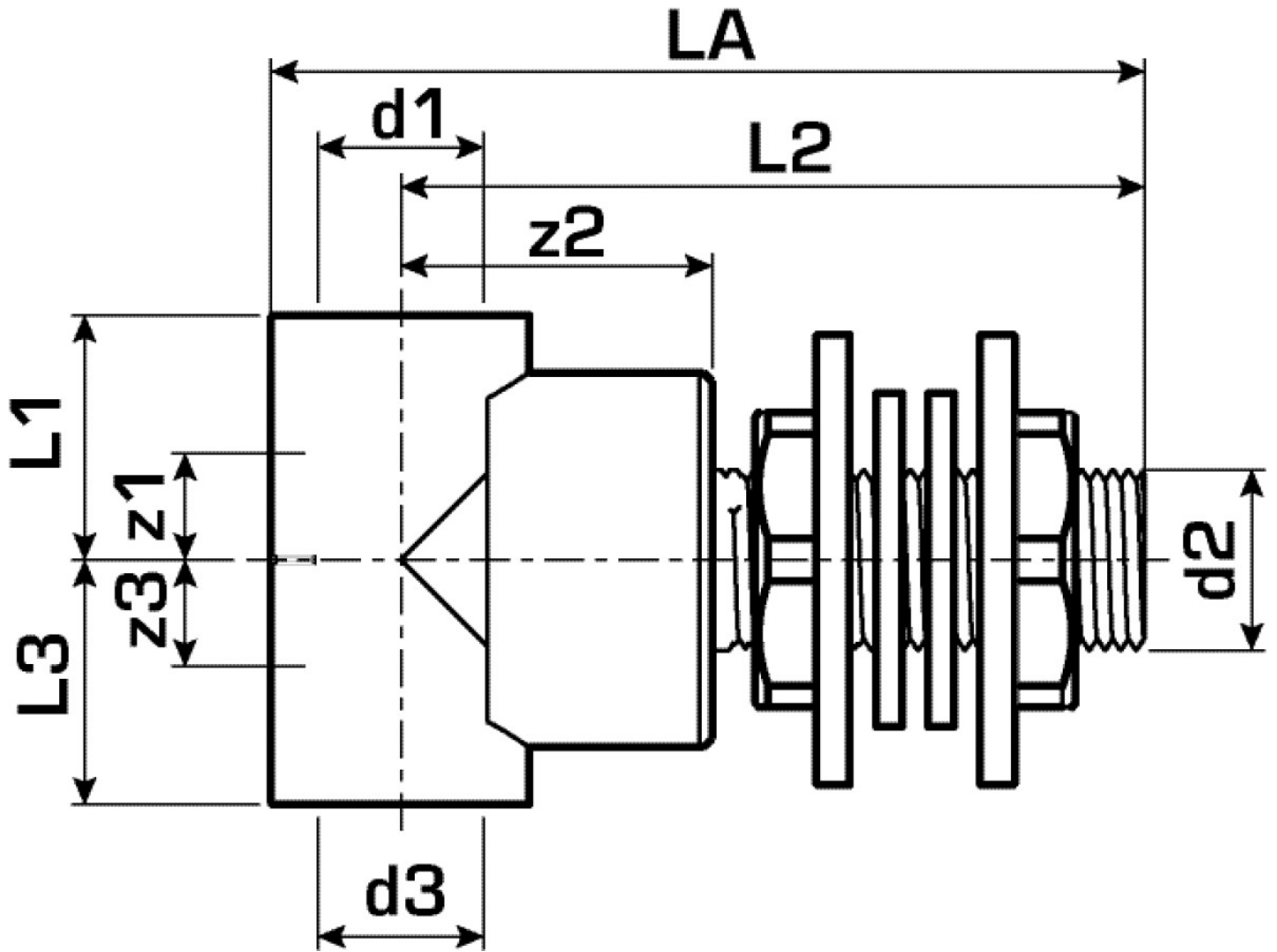
# Specifications

## Technical properties

**maximum working pressure at 20 ° C** 16 bar

## Product information

<b>VPE1</b>	5,00 SA1
<b>VPE2</b>	30,00 KT1
<b>VPE3</b>	120,00 KT2
<b>VPE4</b>	2880,00 PAL
<b>weight</b>	0,303 KGM
<b>text</b>	KETRIX hollow wall connection tee with female thread
<b>INTRNR</b>	39174000
<b>main material group</b>	KETRIX
<b>material group</b>	KETRIX metal fittings
<b>code</b>	TRI33HA



Art. No	label
55221DA2	20x1/2"x50