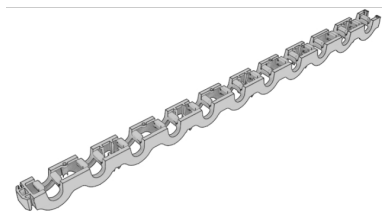


# CLIMATE FIX

KC610B CLIMATEFIX near surface thermal activated concrete clamping rail 16 large pack

6353065

## Areas of application

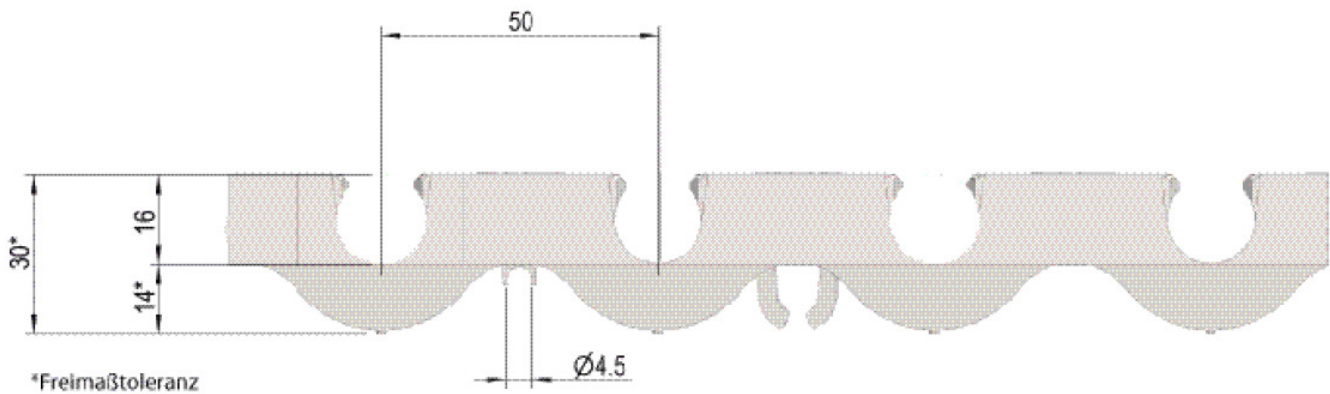


PP clamping rail (recycled granulate, colour may differ), with self-clamping pipe fastening for pipes d16mm in 50mm spacing or optional 4.5mm pipe, endlessly expandable through a push fitting, fastening option with optionally KC611 stainless steel nails.

d16: L: 0.55m W: 30mm H: 30mm

# Specifications

| Product information |                                                                  |
|---------------------|------------------------------------------------------------------|
| VPE1                | 182,00 KT1                                                       |
| VPE2                | 2912,00 PAL                                                      |
| L                   | 0,55                                                             |
| weight              | 0,098 KGM                                                        |
| text                | CLIMATEFIX near surface thermal activated concrete clamping rail |
| INTRNR              | 39161000                                                         |
| main material group | CLIMATEFIX                                                       |
| material group      | CLIMATEFIX fittings                                              |
| code                | KC610B                                                           |



| Art. No | label         |
|---------|---------------|
| 6353065 | 16 large pack |