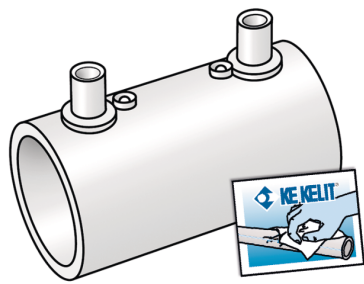


# KELEN PP-RCT

## KE17 KELIT PP E welding socket 90

2535001

### Areas of application



KELIT Electro - welding socket with barcode, incl. cleaning tissue and installation guidelines d20 - 160mm, can be welded with WZ140 E-socket welding machine as of 2021 or commonly commercially available E-welding device equipped with barcode reader

Colour: grey

### Approvals:



KE KELIT GmbH

A 4020 Linz, Ignaz-Mayer-Straße 17, Austria, Europe

PHONE +43 (0) 50 779 E-MAIL [office@kekelit.com](mailto:office@kekelit.com)

[www.kekelit.com](http://www.kekelit.com)

# Specifications

## Article information

port 1	Kunststoffschweißmuffe
port 2	Kunststoffschweißmuffe
design	gerade
press contour	universal

## Product information

VPE1	1,00 SA1
VPE2	9,00 KT1
VPE3	54,00 KT2
VPE4	864,00 PAL
weight	0,233 KGM
text	KELIT PP E welding socket
INTRNR	39174000
main material group	KELEN
material group	KELEN plastic fittings
code	KE17

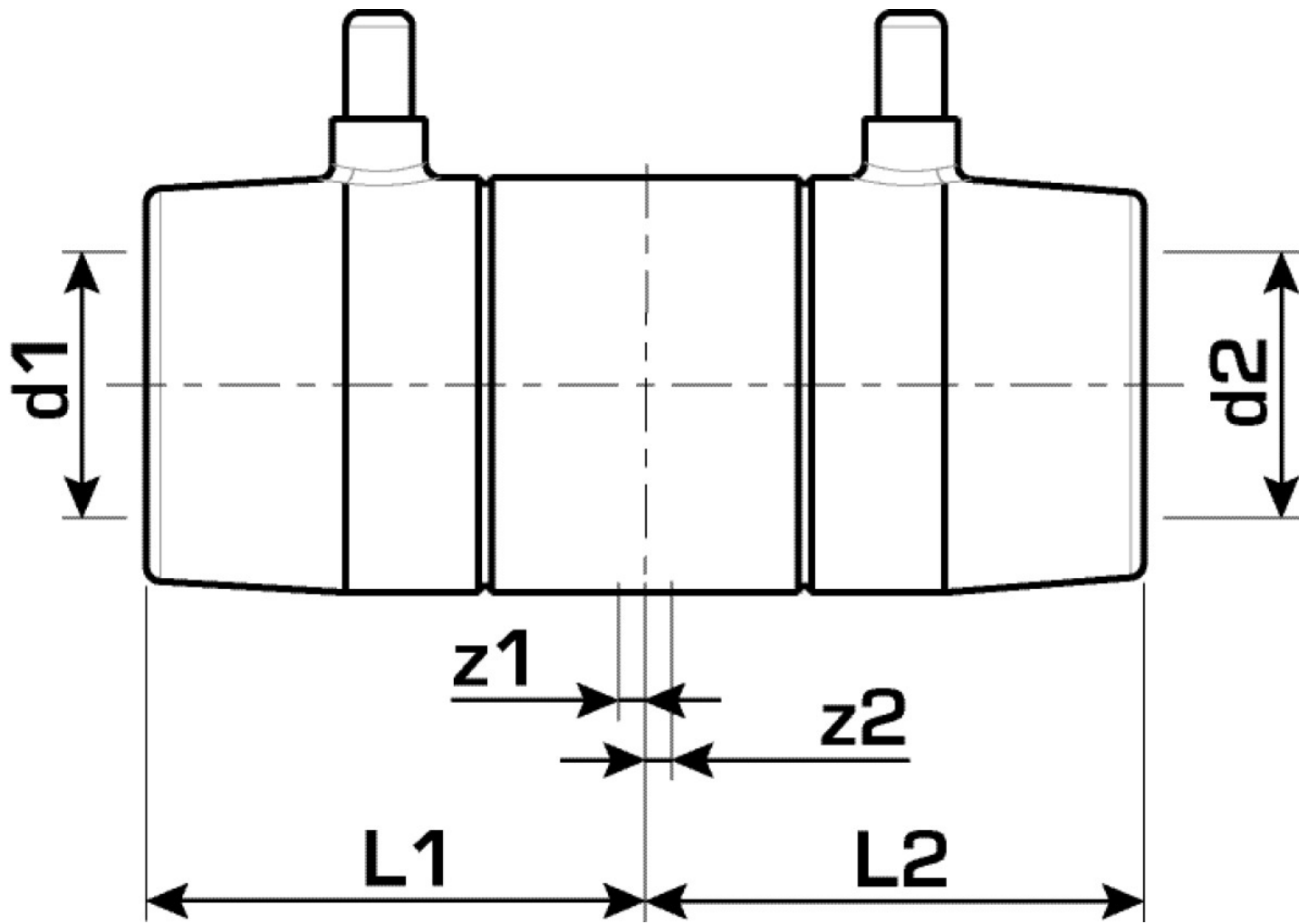


**KE KELIT GmbH**

A 4020 Linz, Ignaz-Mayer-Straße 17, Austria, Europe

**PHONE** +43 (0) 50 779 **E-MAIL** office@kekelit.com

[www.kekelit.com](http://www.kekelit.com)



Art. No	label	d1 mm	d2 mm	L1 mm	L2 mm	z1 mm	z2 mm
2535001	90	90	90	38	38	2	2