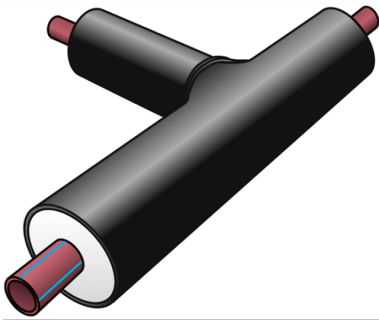


# TRI2030 KETRIX-PE tee 20x2.3

3019510

## Areas of application



Pre-insulated industrial tee, equal

Medium pipe: d20-125 = TRI08, adhesion-pretreated

Medium pipe: d160 = TRI02, adhesion-pretreated

Insulation: PUR rigid foam

Jacket pipe: PE-HD

also available as reduced version!

Leg length: 500 x 500 x 500mm, other leg lengths available on request!

# Specifications

## Product information

|                            |                                 |
|----------------------------|---------------------------------|
| <b>casing DA</b>           | 90                              |
| <b>VPE1</b>                | 1,00 STK                        |
| <b>weight</b>              | 1,830 KGM                       |
| <b>text</b>                | KETRIX-PE tee                   |
| <b>INTRNR</b>              | 39174000                        |
| <b>main material group</b> | KETRIX CX/PE                    |
| <b>material group</b>      | KETRIX CX/PE pipes and fittings |
| <b>code</b>                | TRI2030                         |

| <b>Art. No</b> | <b>label</b> |
|----------------|--------------|
| 3019510        | 20x2.3       |