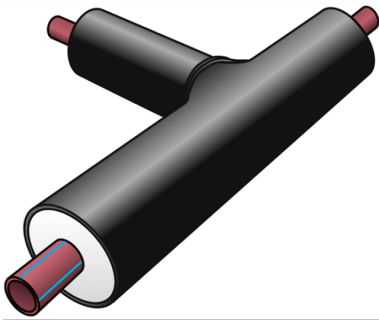


TRI2030 KETRIX-PE tee 32x3.6

3019530

Areas of application



Pre-insulated industrial tee, equal

Medium pipe: d20-125 = TRI08, adhesion-pretreated

Medium pipe: d160 = TRI02, adhesion-pretreated

Insulation: PUR rigid foam

Jacket pipe: PE-HD

also available as reduced version!

Leg length: 500 x 500 x 500mm, other leg lengths available on request!

Specifications

Product information	
casing DA	90
VPE1	1,00 STK
weight	2,070 KGM
text	KETRIX-PE tee
INTRNR	39174000
main material group	KETRIX CX/PE
material group	KETRIX CX/PE pipes and fittings
code	TRI2030

Art. No	label
3019530	32x3.6