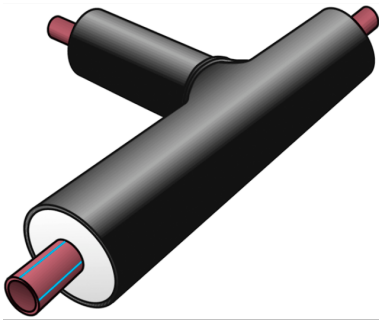


# TRI2030 KETRIX-PE tee 50x6.9

3019550

## Areas of application



Pre-insulated industrial tee, equal

Medium pipe: d20-125 = TRI08, adhesion-pretreated

Medium pipe: d160 = TRI02, adhesion-pretreated

Insulation: PUR rigid foam

Jacket pipe: PE-HD

also available as reduced version!

Leg length: 500 x 500 x 500mm, other leg lengths available on request!

# Specifications

Product information	
<b>casing DA</b>	110
<b>VPE1</b>	1,00 STK
<b>weight</b>	3,660 KGM
<b>text</b>	KETRIX-PE tee
<b>INTRNR</b>	39174000
<b>main material group</b>	KETRIX CX/PE
<b>material group</b>	KETRIX CX/PE pipes and fittings
<b>code</b>	TRI2030

Art. No	label
3019550	50x6.9