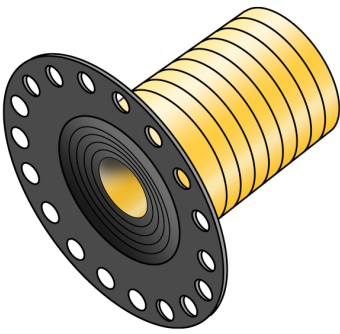


KELOX

KM534 KELIT wall bracket sealing sleeve 1/2"

7704270

Areas of application



Wall bracket seal for dry construction and normal installation from the wall, incl. 60mm-long plastic push-on tube that can be cut to length. The construction plug can be screwed into the wall bracket and removed easily when carrying out second fix work.

To fit all KMP, KMU, SMX and NP wall brackets.

Specifications

Product information	
VPE1	10 SA1
VPE2	50 KT1
VPE3	300 KT2
weight	0,005 KGM
text	KELIT wall bracket sealing sleeve
INTRNR	40169997
main material group	KELOX
material group	KELOX accessories
code	KM534

Art. No	label
7704270	1/2"