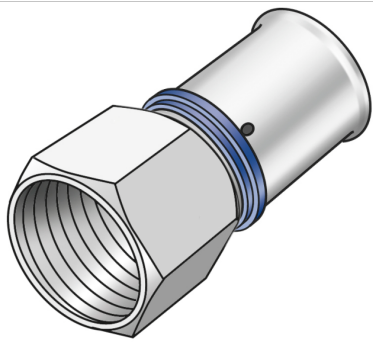


# KELOX

## KMU457 KELOX-ULTRAX adaptor female 50x6/4"

71206H07

### Areas of application



Press-fit adaptor with female thread, made of non-porous metallized brass; including support sleeves with O-rings and steel or stainless steel d16-50mm press-fit sleeves; "leak before pressed"  
DO NOT screw in any threaded pipes and cast iron fittings!

### Approvals:



# Specifications

## Article information

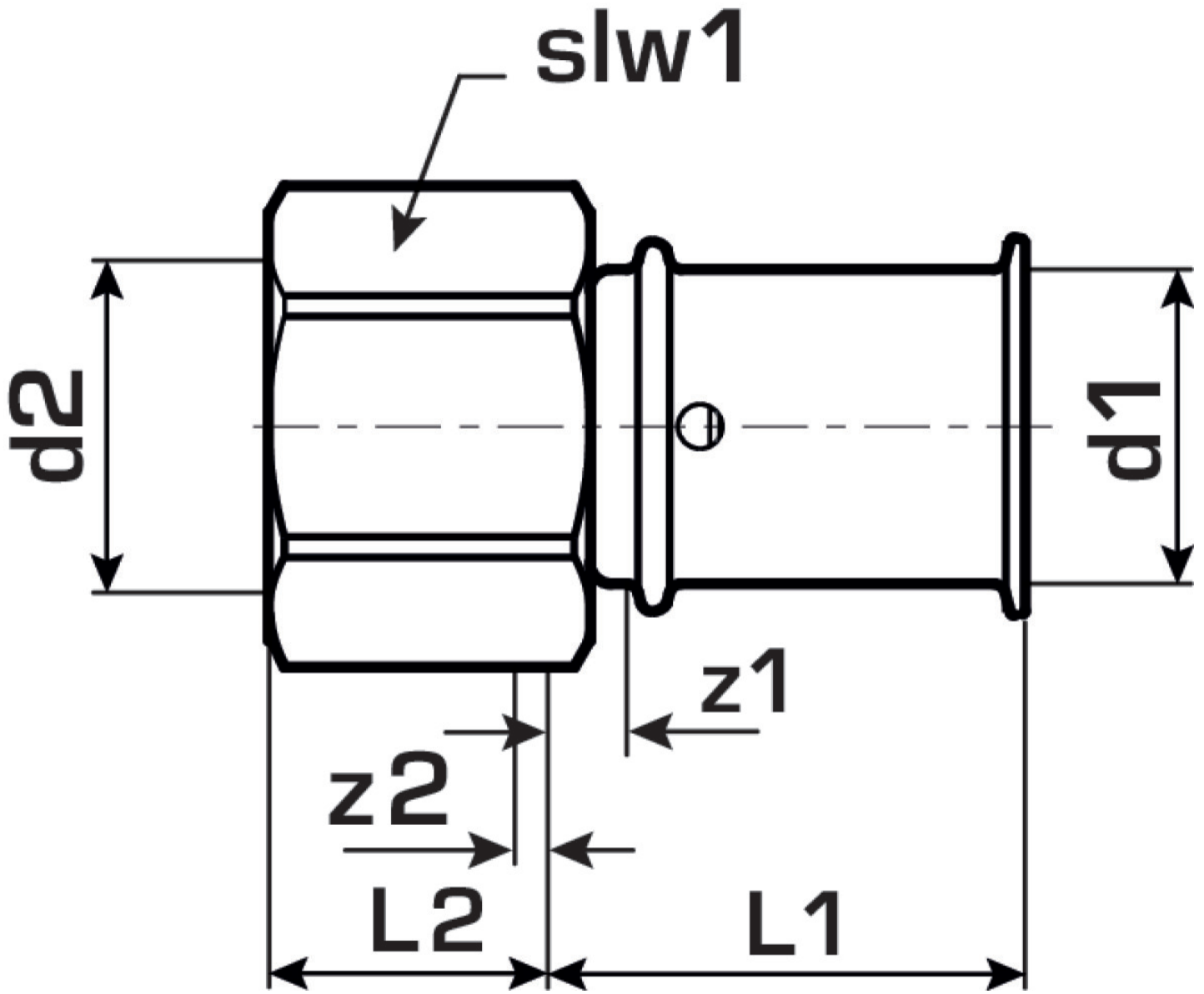
port 1	Pressing socket
port 2	Female thread cylindrical BSPT-Rp (ISO 7-1)
execution	1-part
design	Straight
press contour	U

## Technical properties

maximum working pressure at 20 ° C	10
------------------------------------	----

## Product information

VPE1	1 SA1
VPE2	12 KT1
weight	0,42 KGM
text	KELOX-ULTRAX adaptor female
INTRNR	74122000
main material group	KELOX
material group	KELOX-ULTRAX metal fittings
code	KMU457



Art. No	label	d2	d1 mm	L1	z1	z2 mm	slw1
71206H07	50x6/4"	1 1/2" (40)	50	45.5	30	5	58