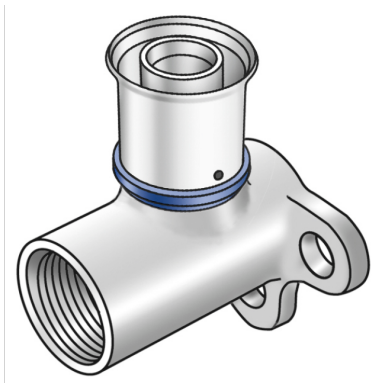


KELOX

KMU480 KELOX-ULTRAX wall bracket 90° female 25x3/4"

71250E04

Areas of application



Press-fit wall bracket with female thread made from non-porous metallized brass; including support sleeves with O-rings and steel or stainless steel press-fit sleeves, "leak before pressed"

Overall height:

1/2" - 46mm

d20x3/4" - 49mm

d25x3/4" - 56mm

DO NOT screw in threaded pipes and cast iron fittings!

Approvals:



Specifications

Article information

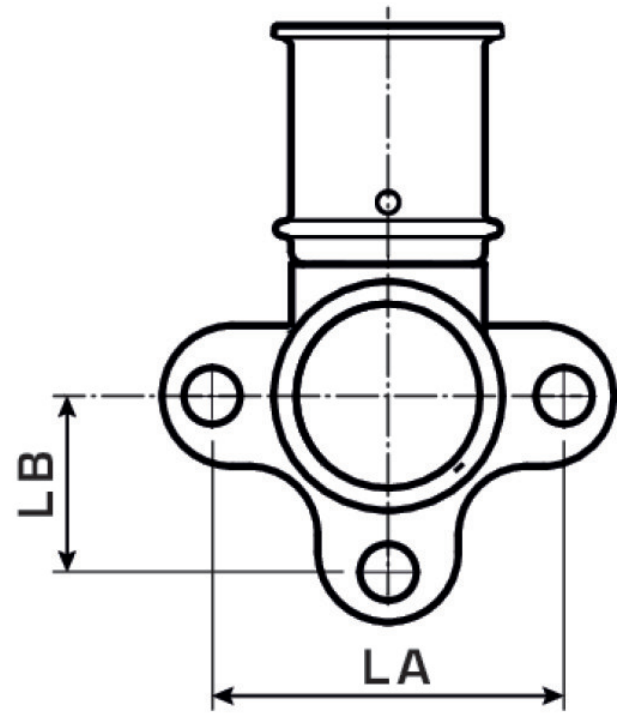
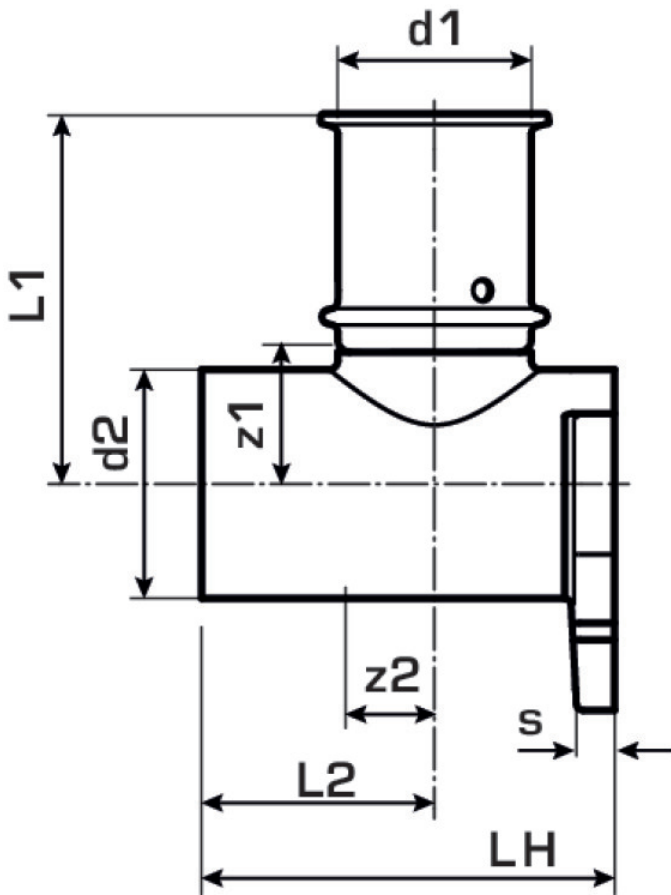
port 1	Pressing socket
design	Continuously right-angled
press contour	U

Technical properties

maximum working pressure at 20 ° C	10
------------------------------------	----

Product information

VPE1	6 SA1
VPE2	60 KT1
weight	0,162 KGM
text	KELOX-ULTRAX wall bracket 90° female
INTRNR	74122000
main material group	KELOX
material group	KELOX-ULTRAX metal fittings
code	KMU480



Art. No	label	d1 mm	L1	L2	z1	z2
71250E04	25x3/4"	25	54	28	21	10