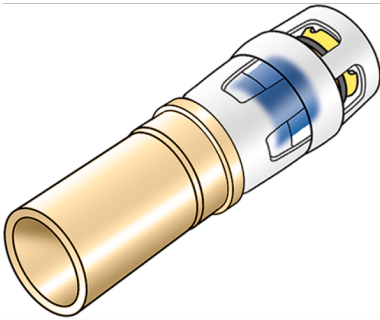


KELOX

KMP489 KELOX-PROTEC - STEELFIX adapter 20/18

73272CD0

Areas of application



?Press/push-in adapter, straight, from Steelfix, Copperfix pipe size to KELOX-PROTEC push-in sleeve made of red brass, incl. push-on sleeve made of transparent polyamide, O-rings, withdrawal barriers and a protector ring as an insertion locking device

ATTENTION! Connection to pipe end only suitable as a compression fitting or press-fit connection!

Approvals:



Specifications

Article information

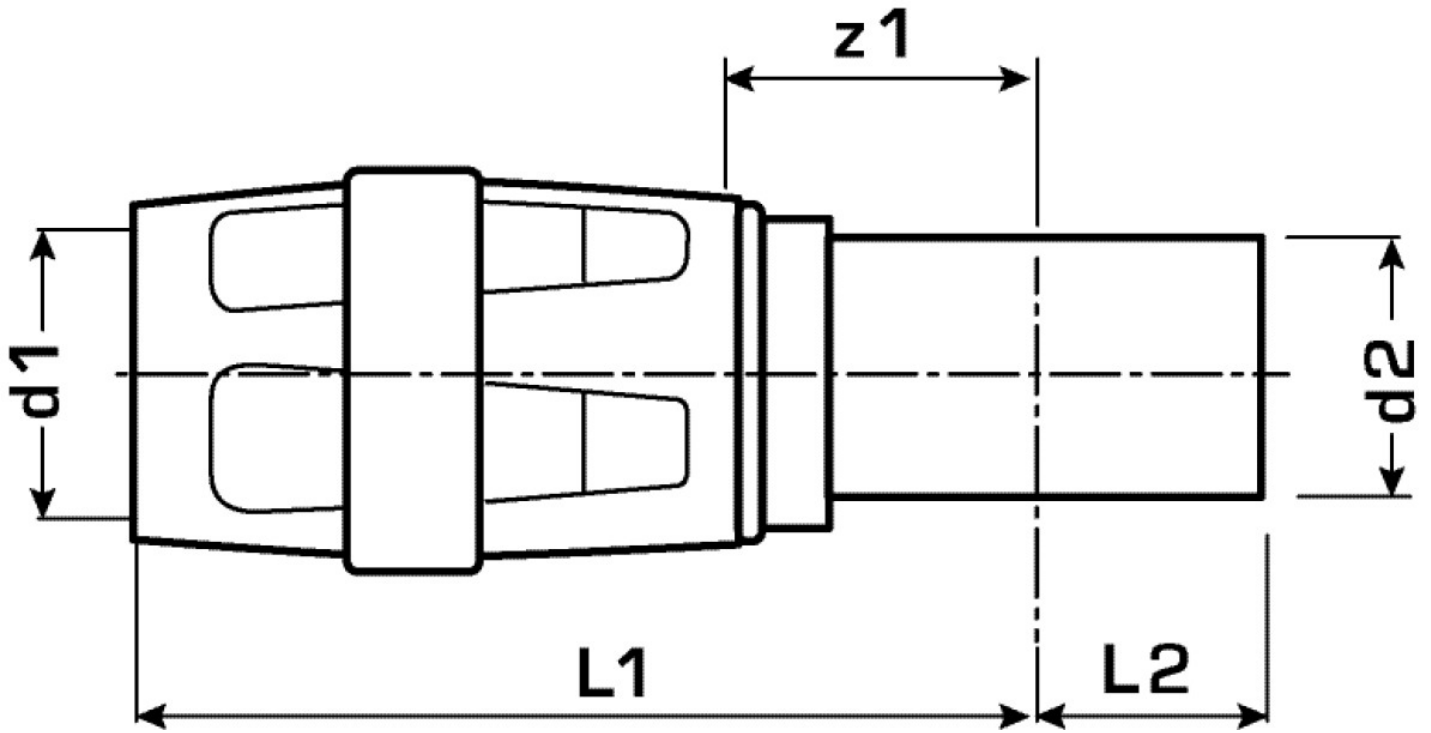
| | |
|--------|---------------|
| port 1 | Plug-in |
| port 2 | Miscellaneous |
| design | Straight |

Technical properties

| | |
|------------------------------------|--------|
| maximum working pressure at 20 ° C | 10 bar |
|------------------------------------|--------|

Product information

| | |
|---------------------|---------------------------------|
| VPE1 | 10,00 SA1 |
| VPE2 | 140,00 KT1 |
| weight | 0,044 KGM |
| text | KELOX-PROTEC - STEELFIX adapter |
| INTRNR | 74122000 |
| main material group | KELOX |
| material group | KELOX-PROtec pushfittings |
| code | KMP489 |



| Art. No | label | d1 mm | d2 mm | L1 mm | L2 mm | z1 mm |
|----------|-------|-------|-------|-------|-------|-------|
| 73272CD0 | 20/18 | 20 | 18 | 47 | 20 | 14 |