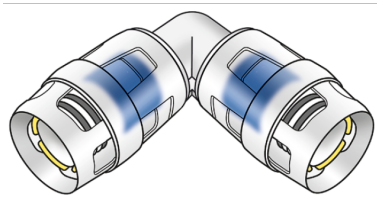


KELOX

KWP420 KELOX-PROTEC PPSU elbow 90° 16

73603BB0

Areas of application



?Plug-in elbow 90° for changing direction with a minimal radius, made of PPSU, incl. support sleeves, O-rings, withdrawal barriers and a protector ring as an insertion locking device

Approvals:



KE KELIT GmbH

A 4020 Linz, Ignaz-Mayer-Straße 17, Austria, Europe

PHONE +43 (0) 50 779 E-MAIL office@kekelit.com

www.kekelit.com

Specifications

Article information

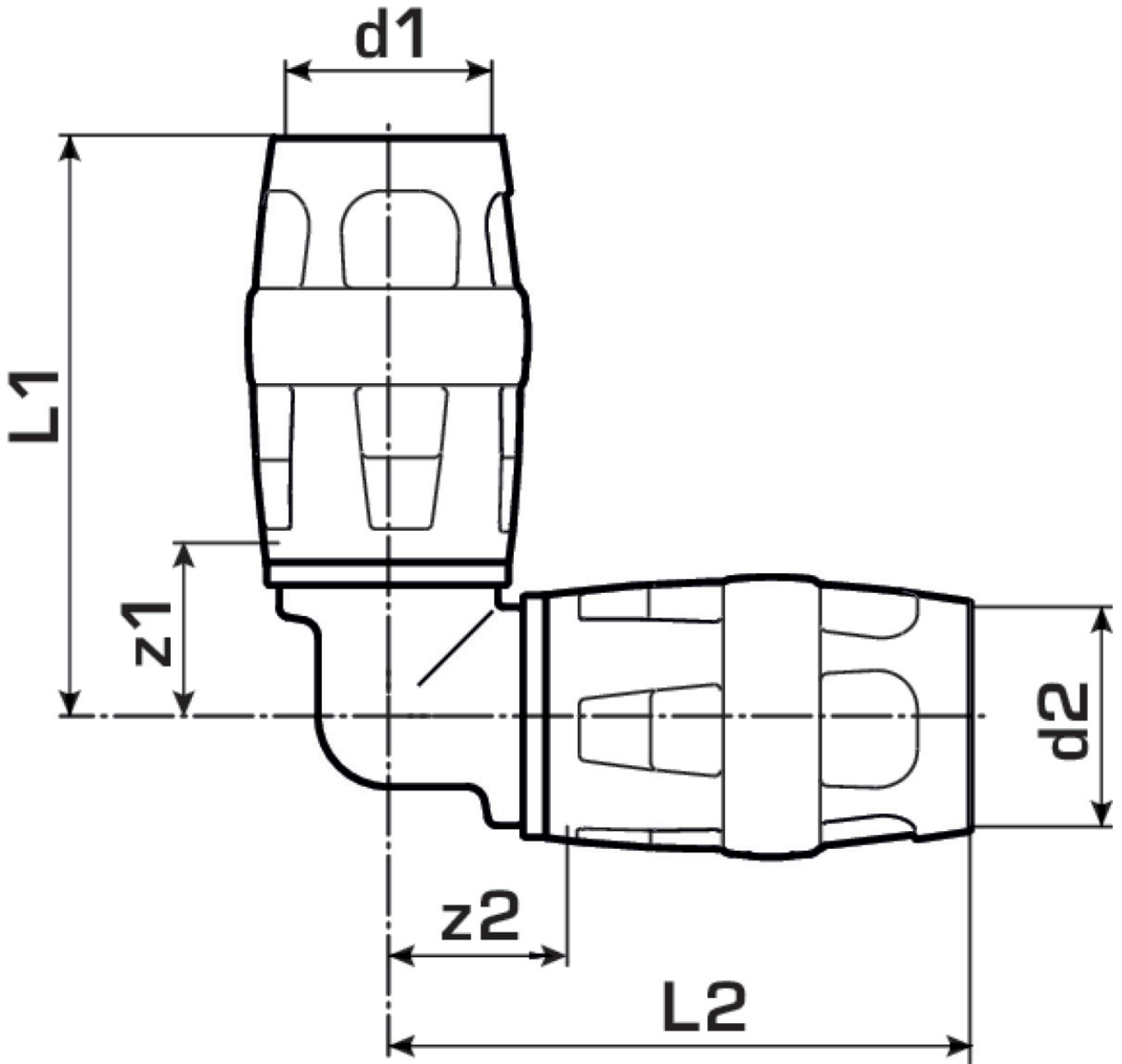
port 1	Plug-in
port 2	Plug-in
execution	Miscellaneous
design	Knee
angle	90 °

Technical properties

maximum working pressure at 20 ° C	10 bar
------------------------------------	--------

Product information

VPE1	10 SA1
VPE2	150 KT1
weight	0,023 KGM
text	KELOX-PROTEC PPSU elbow 90°
INTRNR	39174000
main material group	KELOX
material group	KELOX-PROtec-PPSU pushfittings
code	KWP420



Art. No	label	L1 mm	L2 mm	z1 mm	z2 mm
73603BB0	16	46	46	14.5	14.5