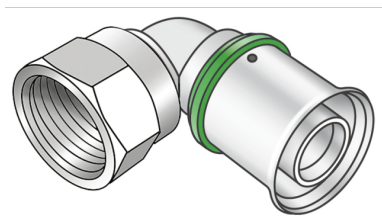


STEELOX

SMX467 ?STEELOX 90° adapter elbow with female thread 20x1/2"

57216D02

Areas of application



?Press-fit adapter elbow with female thread, made of non-porous metallized dezincification-resistant brass (DZR), incl. support sleeves with O-rings and stainless steel pressing sleeves, "leak before pressed"

DO NOT join threaded pipe or malleable iron fittings!

Approvals:



Specifications

Article information

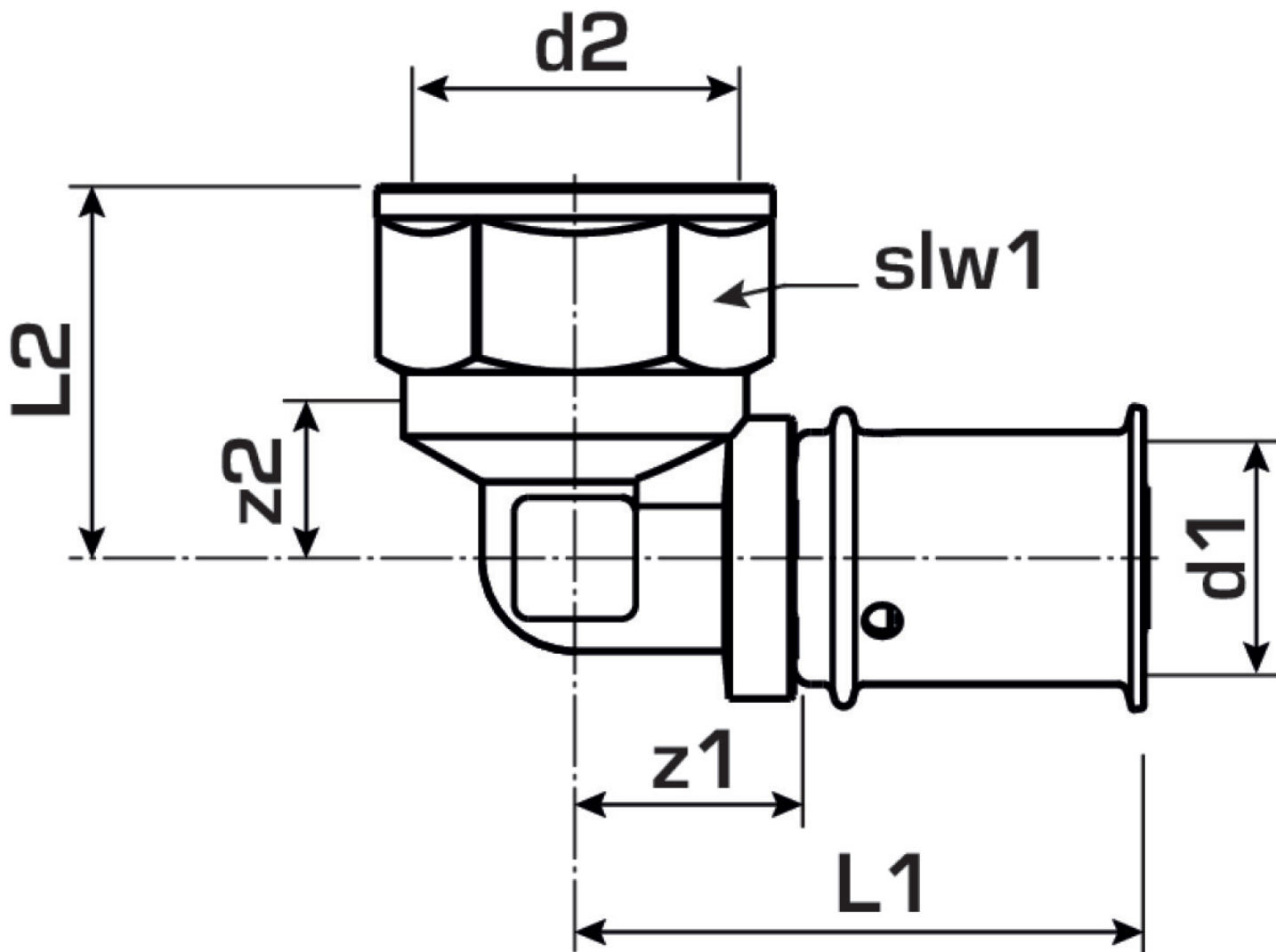
port 1	Pressing socket
execution	1-part
design	Knee
angle	90 °
press contour	SX

Technical properties

maximum working pressure at 20 ° C	10 bar
------------------------------------	--------

Product information

VPE1	10 SA1
VPE2	160 KT1
weight	0,082 KGM
text	?STEELOX 90° adapter elbow with female thread
INTRNR	74122000
code	SMX467



Art. No	label	d2 Inches	d1	L1	L2	z1	z2	slw1
57216D02	20x1/2"	1/2" (15)	20	56	29	30.5	29	24