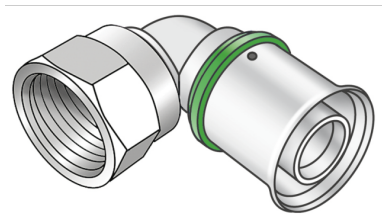


STEELOX

SMX467 ?STEELOX 90° adapter elbow with female thread 20x3/4"

57216D04

Areas of application



?Press-fit adapter elbow with female thread, made of non-porous metallized dezincification-resistant brass (DZR), incl. support sleeves with O-rings and stainless steel pressing sleeves, "leak before pressed"

DO NOT join threaded pipe or malleable iron fittings!

Approvals:



Specifications

Article information

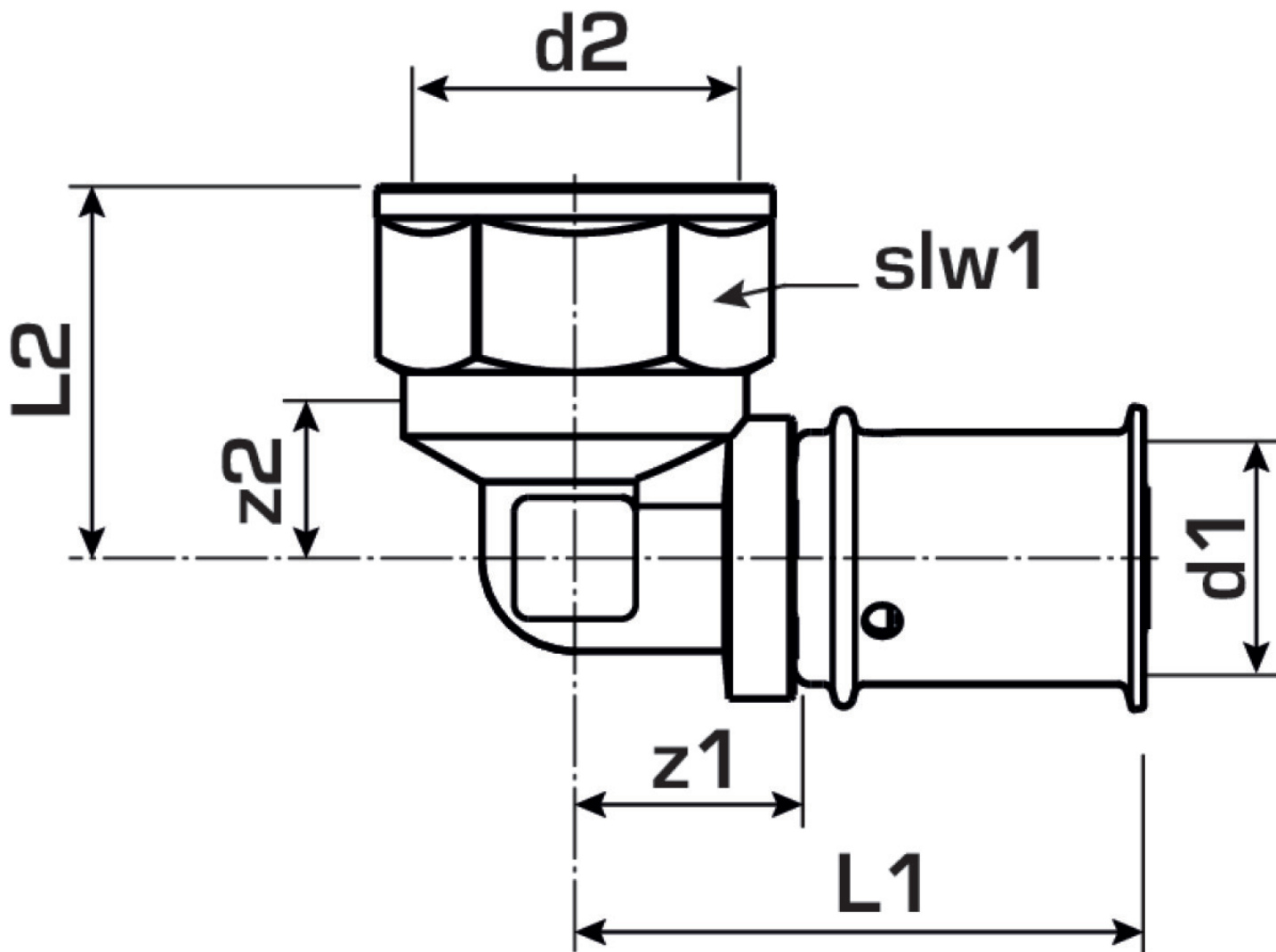
port 1	Pressing socket
execution	1-part
design	Knee
angle	90 °
press contour	SX

Technical properties

maximum working pressure at 20 ° C	10 bar
------------------------------------	--------

Product information

VPE1	10 SA1
VPE2	100 KT1
weight	0,113 KGM
text	?STEELOX 90° adapter elbow with female thread
INTRNR	74122000
code	SMX467



Art. No	label	d2 Inches	d1	L1	L2	z1	z2	slw1
57216D04	20x3/4"	3/4" (20)	20	61	31	35.5	31	30