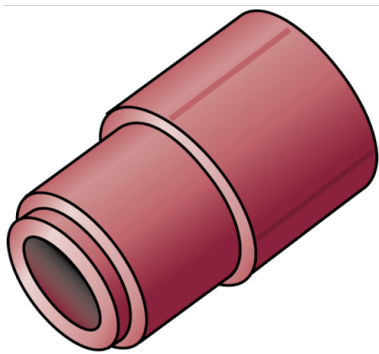


KETRIX

TRI41 KETRIX reducer male/female 110/90

55116LK0

Areas of application



KETRIX polyfusion weld fitting for connecting POB pipes to fittings made of the same material without narrowing the cross section

Specifications

Article information

| | |
|-----------|------------------------|
| port 1 | Plastic welding socket |
| port 2 | Plastic welding socket |
| execution | 1-part |
| design | Straight |

Product information

| | |
|---------------------|----------------------------|
| VPE1 | 1 SA1 |
| VPE2 | 5 KT1 |
| VPE3 | 30 KT2 |
| VPE4 | 480 PAL |
| weight | 0,465 KGM |
| text | KETRIX reducer male/female |
| INTRNR | 39174000 |
| main material group | KETRIX |
| material group | KETRIX plastic fittings |
| code | TRI41 |



| Art. No | label | d1 | d2 | L1 | L2 | z1 | z2 |
|----------|--------|-----|----|----|----|----|----|
| 55116LK0 | 110/90 | 110 | 90 | 60 | 33 | 60 | 33 |