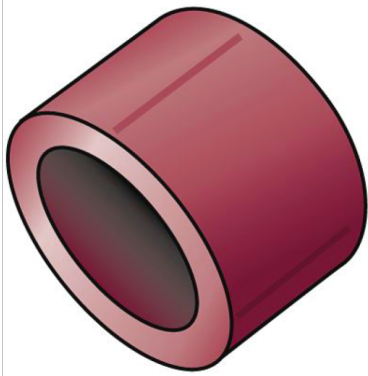


# KETRIX

## TRI60 KETRIX end cap 20

55120D00

### Areas of application



KETRIX polyfusion weld fitting for connecting POB pipes to fittings made of the same material without narrowing the cross section

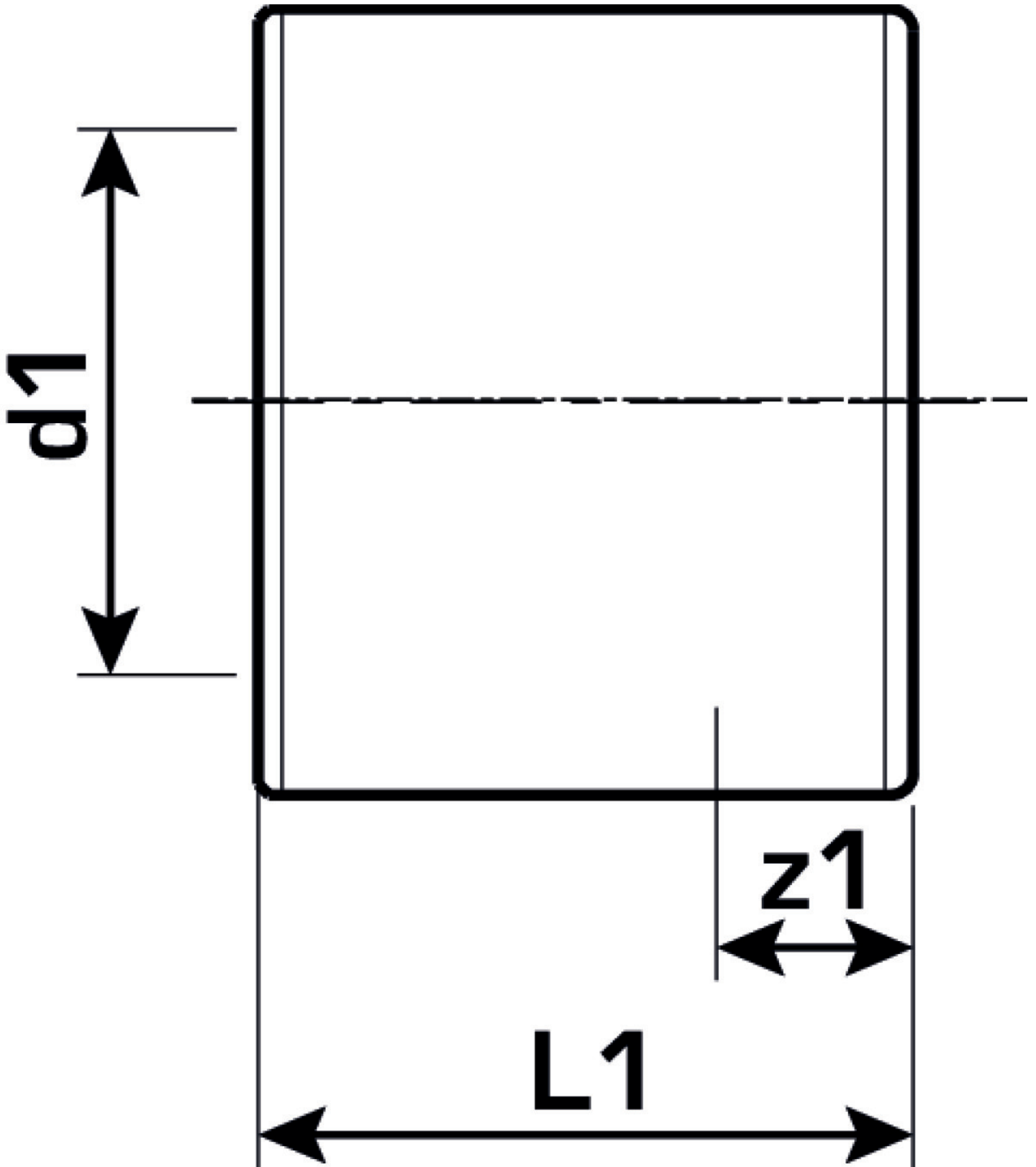
# Specifications

## Article information

**port 1** Plastic welding socket

## Product information

<b>VPE1</b>	10 SA1
<b>VPE2</b>	300 KT1
<b>VPE3</b>	1800 KT2
<b>VPE4</b>	28800 PAL
<b>weight</b>	0,009 KGM
<b>text</b>	KETRIX end cap
<b>INTRNR</b>	39174000
<b>main material group</b>	KETRIX
<b>material group</b>	KETRIX plastic fittings
<b>code</b>	TRI60



Art. No	label	d1	L1	z1
55120D00	20	20	24	9



**KE KELIT GmbH**

A 4020 Linz, Ignaz-Mayer-Straße 17, Austria, Europe

**PHONE** +43 (0) 50 779 **E-MAIL** [office@kekelit.com](mailto:office@kekelit.com)

[www.kekelit.com](http://www.kekelit.com)