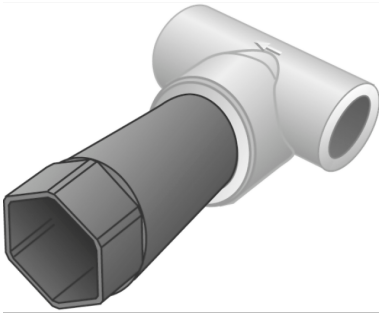


TRI50P KETRIX shut-off valve with stopper 25x3/4"

55227E04

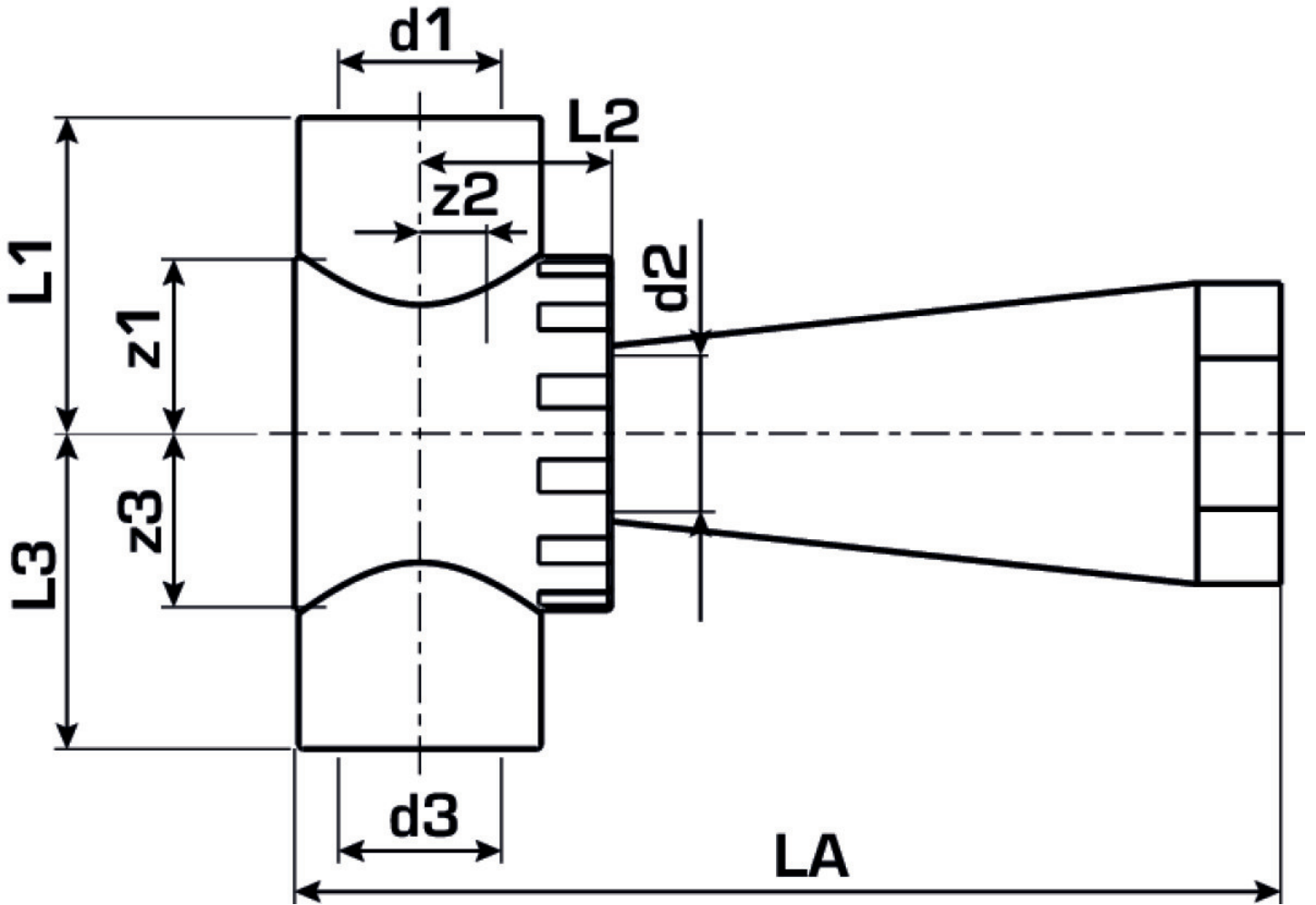
Areas of application



KETRIX polyfusion weld fitting for connecting POB pipes with fittings made of the same material without narrowing the cross section, shut-off valve with plastic seat including construction plug
Compatible with: K50C 3/4" and K50F 3/4"

Specifications

Product information	
VPE1	1 SA1
VPE2	15 KT1
VPE3	60 KT2
VPE4	1440 PAL
weight	0,18 KGM
text	KETRIX shut-off valve with stopper
INTRNR	39174000
main material group	KETRIX
material group	KETRIX metal fittings
code	TRI50P



Art. No	label
55227E04	25x3/4"