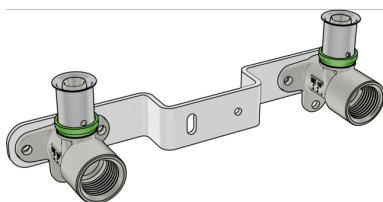


# STEELOX

SMX485K STEELOX connection set 20x1/2"  
15cm

57293D02

## Areas of application



With SMX480 press-fit wall bracket fitting, made from dezincification-resistant brass (DZR) and non-porous metal-plating, incl. support sleeves with O-rings and stainless steel pressing sleeves. Do not screw in threaded pipes and cast iron fittings!

## Approvals:



KE KELIT GmbH

A 4020 Linz, Ignaz-Mayer-Straße 17, Austria, Europe

PHONE +43 (0) 50 779 E-MAIL [office@kekelit.com](mailto:office@kekelit.com)

[www.kekelit.com](http://www.kekelit.com)

# Specifications

Product information	
VPE1	10,00 KT1
weight	0,739 KGM
text	?STEELOX connection set
INTRNR	74122000
code	SMX485K

Art. No	label
57293D02	20x1/2" 15cm