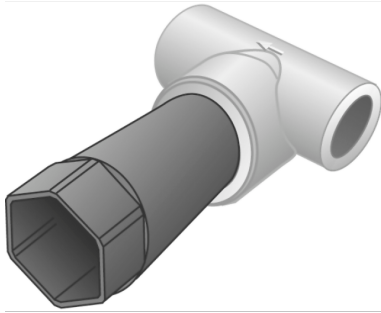


KELEN

KE50P KELEN PP-RCT shut-off valve body with stopper 32x3/4"

2660771

Areas of application



KELEN PP-RCT Polyfusion welding fitting for connecting pipes with fittings made of the same material (no reduction of internal diameter), shut-off valve with plastic seat incl. stopper
Compatible with: K50C 3/4" and K50F 3/4"

Approvals:



KE KELIT GmbH

A 4020 Linz, Ignaz-Mayer-Straße 17, Austria, Europe

PHONE +43 (0) 50 779 E-MAIL office@kekelit.com

www.kekelit.com

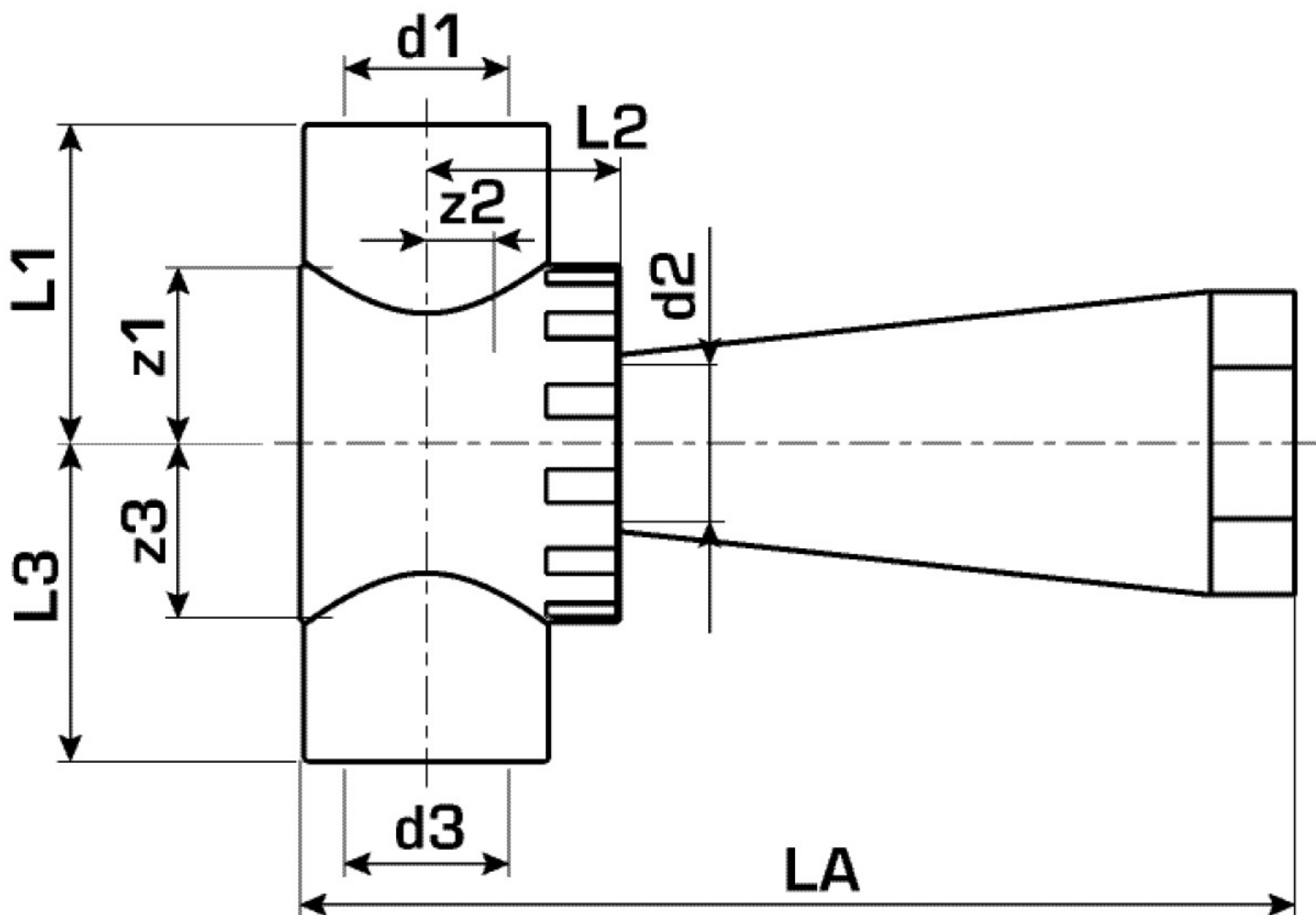
Specifications

Article information

| | |
|-----------|------------------------|
| port 3 | Kunststoffschweißmuffe |
| execution | T-Stück |
| angle | 90 ° |

Product information

| | |
|---------------------|---|
| VPE1 | 1,00 SA1 |
| VPE2 | 15,00 KT1 |
| VPE3 | 60,00 KT2 |
| VPE4 | 1440,00 PAL |
| weight | 0,203 KGM |
| text | KELEN PP-RCT shut-off valve body with stopper |
| INTRNR | 39174000 |
| main material group | KELEN |
| material group | KELEN metal fittings |
| code | KE50P |



| Art. No | label | d1 mm | d2 Zoll | d3 mm | d1 mm | L1 mm | L1 mm | L2 mm | L3 mm | L1 / L3 mm | z1 mm | z2 mm | z3 mm | z2 mm |
|---------|--------|-------|---------|-------|-------|-------|-------|-------|-------|------------|-------|-------|-------|-------|
| 26607i | 32x3/4 | 32 | 3/4" | 32 | 32 | 114 | 41 | 34 | 41 | 38 | 21 | 42 | 21 | 16 |