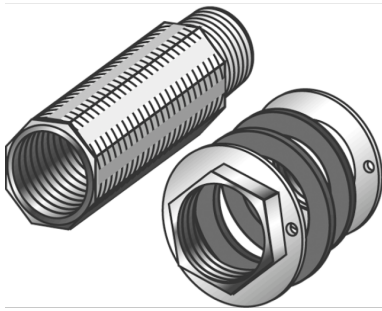


# KELEN

## K84 KELIT hollow wall connection unit 1/2"xM28

2678000

### Areas of application



50mm extension piece made of brass, M28mm male thread, octagonal design, seal and 2 lock nuts  
Do NOT screw in metal threaded pipes or cast iron fittings!

### Approvals:



KE KELIT GmbH

A 4020 Linz, Ignaz-Mayer-Straße 17, Austria, Europe

PHONE +43 (0) 50 779 E-MAIL [office@kekelit.com](mailto:office@kekelit.com)

[www.kekelit.com](http://www.kekelit.com)

# Specifications

## Technical properties

<b>insertion depth 1 (es1)</b>	50 mm
--------------------------------	-------

## Product information

<b>VPE1</b>	5,00 SA1
-------------	----------

<b>VPE2</b>	30,00 KT1
-------------	-----------

<b>VPE3</b>	120,00 KT2
-------------	------------

<b>VPE4</b>	2880,00 PAL
-------------	-------------

<b>weight</b>	0,204 KGM
---------------	-----------

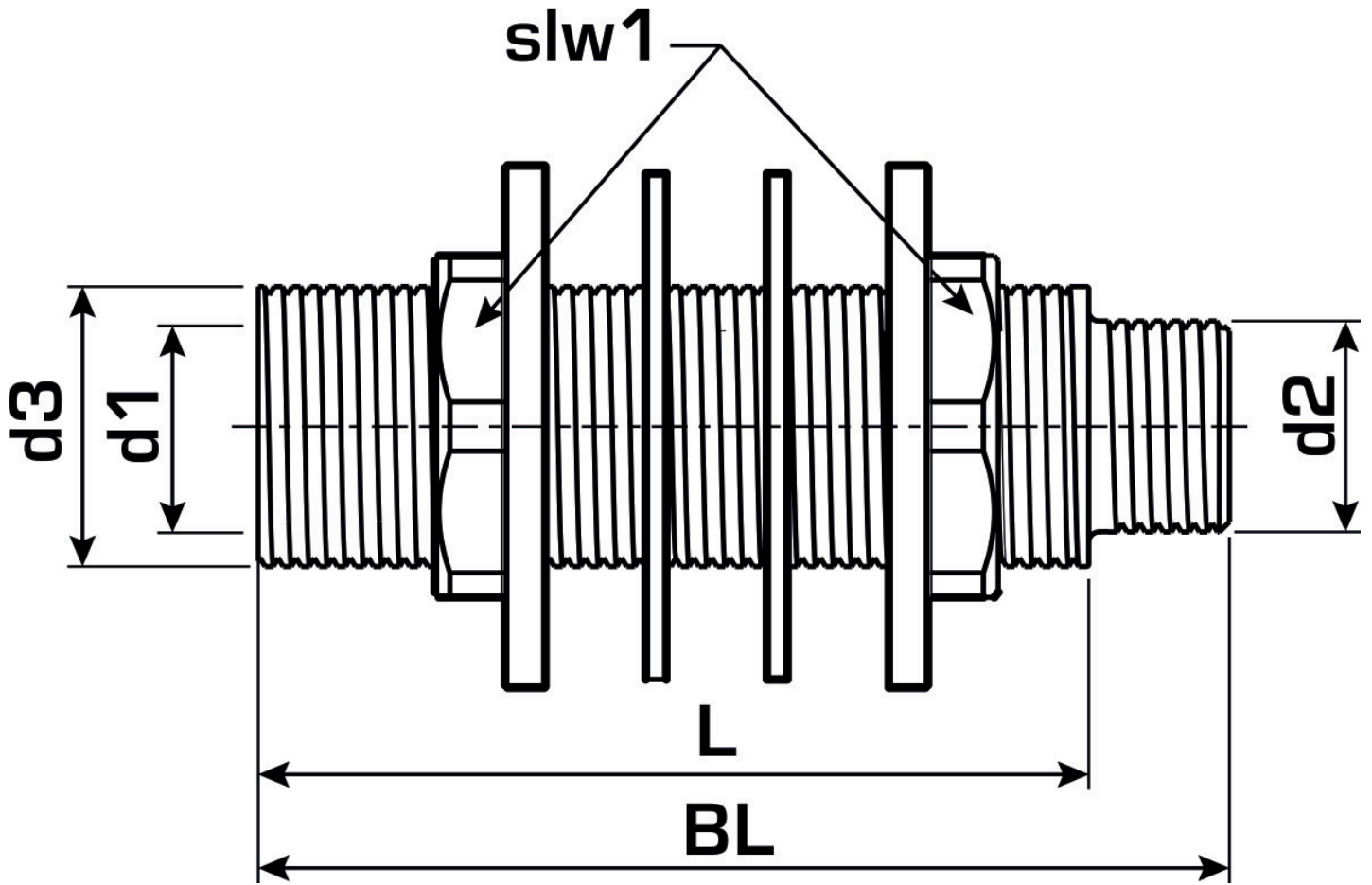
<b>text</b>	KELIT hollow wall connection unit
-------------	-----------------------------------

<b>INTRNR</b>	39174000
---------------	----------

<b>main material group</b>	KELEN
----------------------------	-------

<b>material group</b>	KELEN accessories
-----------------------	-------------------

<b>code</b>	K84
-------------	-----



Art. No	label	L1 mm	insertion depth 1 (es1) mm	slw1 mm
2678000	1/2"xM28	64	50	30