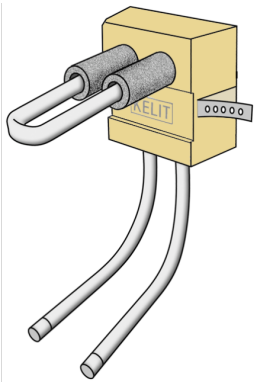


KELOX

KM547 KELOX flush-mounted wall block 16 Type 1

9006500

Areas of application



?Insulating wall block for valve radiators to be installed before plaster work is done; including inlaid d16 KELOX multilayer pipes between the feed line and return line, for subsequent connection of the radiators, suitable for flush mounting

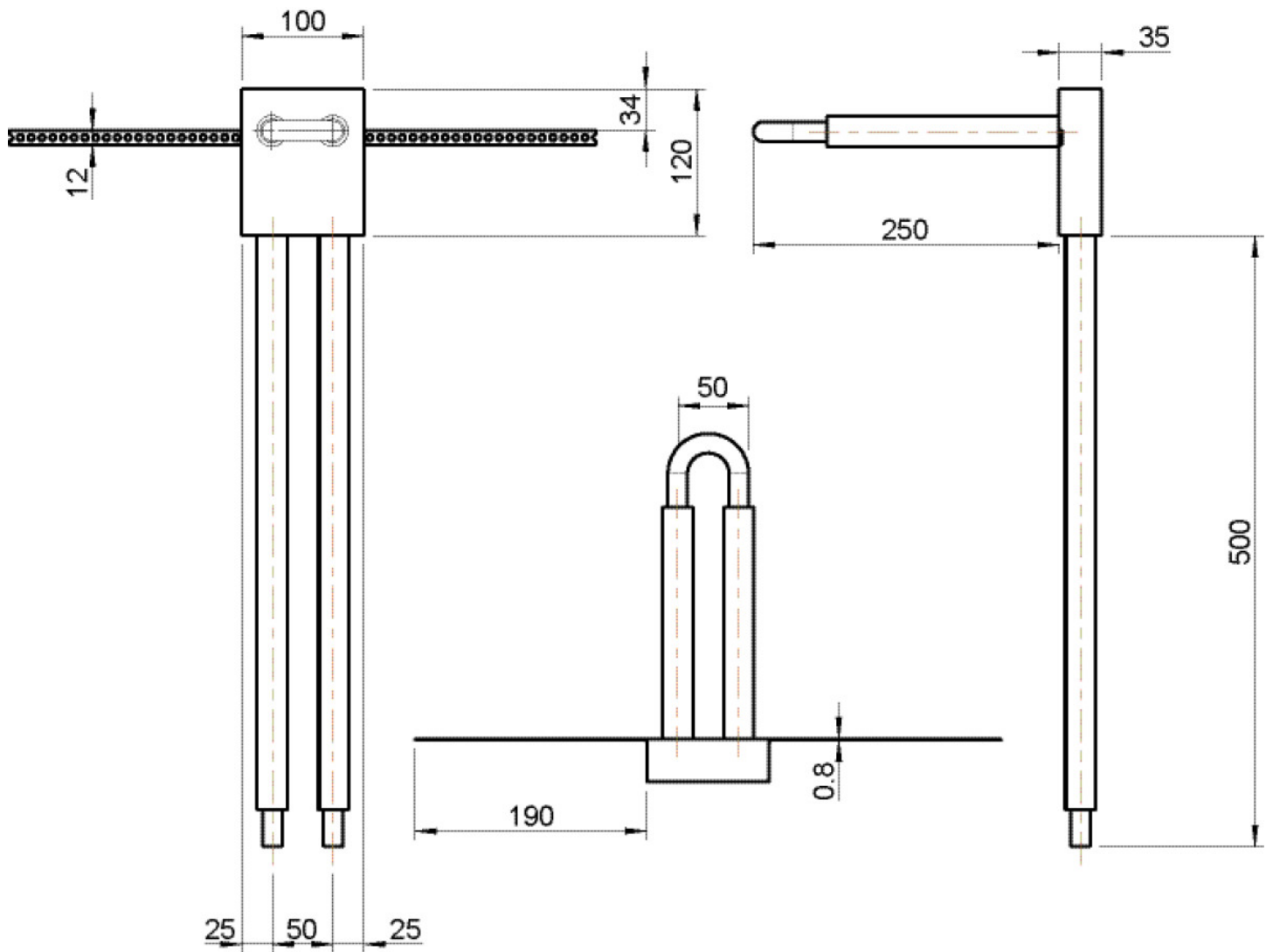
Type 1: W: 110mm, H: 200 mm, D: 50mm - pipe 500mm, elbow 150mm

Type 2: W: 100mm, H: 120 mm, D: 35mm - pipe 500mm, elbow 250mm

Type 3: W: 110mm, H: 200 mm, D: 50mm - pipe 500mm, elbow 250mm

Specifications

| Product information | |
|---------------------|--------------------------------|
| VPE1 | 1,00 KT1 |
| VPE2 | 10,00 KT2 |
| weight | 0,230 KGM |
| text | KELOX flush-mounted wall block |
| INTRNR | 39174000 |
| main material group | KELOX |
| material group | KELOX accessories |
| code | KM547 |



| Art. No | label |
|---------|-----------|
| 9006500 | 16 Type 1 |